

APRIL 2024, ISSUE 382

Woodchat

Tauranga Woodcrafters' Guild Monthly E-Newsletter



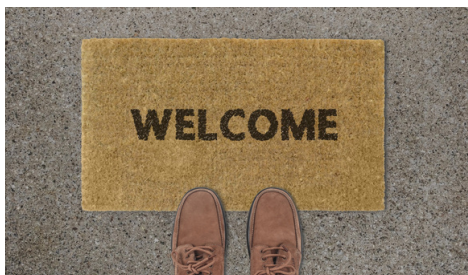
Member of the National
Association of Woodworkers NZ



Table mats and coasters
Oak burl (burr)
Bill Wilson
Made for his sister in
Australia. The oak is from a
very old tree felled recently
in the Devonport Road/19th
Ave cemetery.

President's Report

Obair fiodha toilichte.



We have had six new members join the guild in the last month. Welcome: John Almo, Sheila Little, Mark Bennett, Paul Glenton, Richard Keesing and Annette Lasenby.



I hope everyone is keeping well. To all those members who are unwell, or recovering from illness, our thoughts are with you and we all wish you a speedy recovery.

Our sponsors



SAVE THE DATE!



Annual General Meeting

Our Guild's AGM will be held at 1:30pm on Saturday May 18th. Please make time to attend! We have ended the year on a strong note with new members and lots of different wood crafting activities happening. Two motions will be put to the AGM for members to approve:

1. To keep our membership subscription at \$100 for 2024/25.
2. The other being a motion to give approval for an expenses budget for the 2024/25 year.



TOLO Christmas sales 2024

November 1-30 has been booked for members to sell their work in The Old Library Omokoroa (TOLO). The aim is to target Christmas shoppers. The area we have can probably fit about 9 to 10 tables - and we can create a tiered display on each table to show off more work, and also mount items on the walls. TOLO staff sell the work on the club's behalf.



Constitution

We had hoped to be able to submit a new constitution for approval at our 2024 AGM. However, NAW is still finalising the template (following MPI's guidelines) which they plan to recommend to affiliated Guilds to use. So, I anticipate we will need to call a special general meeting at a later date to review and approve a new constitution for our Guild.



Hands Up for the TWG Committee 2024



Our rules require us to elect a President, Vice President, Secretary, Treasurer, Newsletter Editor + 2-3 general roles. How about joining the committee for 2024/25. Simple job and

- you will be giving back and help in the running of the club.
- it's a great way to meet other members.
- you will bring new ideas and energy to the club.

Nomination forms are in the workshop. Contact Phil for more info.

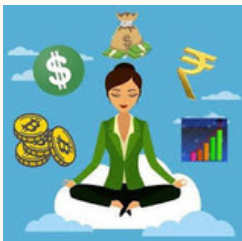
There are really 2 types of Committee tasks:

- The first is management and admin. to keep the club running - paying bills, responding to queries (offers of tools or wood, membership questions etc), organising maintenance, insuring the building, getting rubbish dumped, promoting the club, and IT etc.
- The second is to as a spokesperson & advocate for a group(s). It's a good way to understudy the admin and management tasks so we have a succession system in place.



Who wants to be the Club President? Phil doesn't want to do it forever!

Treasurer



We need someone to step up and be an understudy for the role of treasurer.

Social media and IT



We need someone to maintain the club's website, Facebook page, club records using SharePoint and market the club. Phil does all of this currently.



EVENTS



Jamboree
Lake Taupo



NAW Expo
Burnside, Christchurch



Central Districts Expo
Palmerston North



Manawatu Round Up
Ashhurst, Manawatu

- **Taupo Woodturners Jamboree**

Friday, April 26, 9am - Sunday, April 28, 3pm.
Lake Taupo. Contact Angela 0211 590 915
or [Email](#).

- **Central Districts Woodwork Expo 2024**

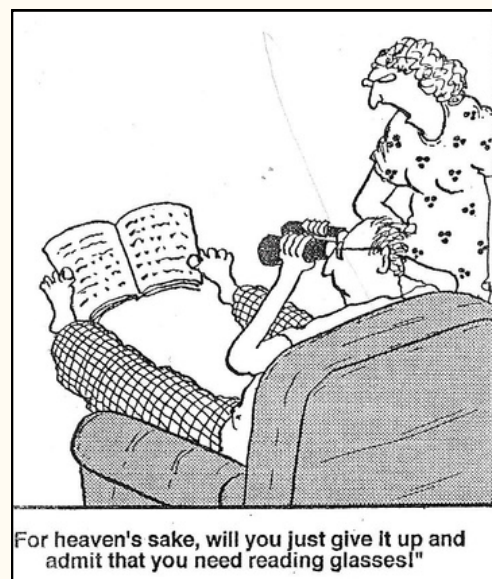
Sunday, May 19. Arena Manawatu,
Waldergrave Street, Palmerston North.
Contact Brian Wilkinson 06 3589720. [Email](#) .
Info [click here](#).

- **National Wood Expo**

Saturday, May 25, 8.30am-Sunday, May 26,
2.15pm. Burnside Bowling Club,
Christchurch. 7 demonstrators. Gala dinner
\$45. Members \$30 per day. Catered morning
and afternoon teas and lunch. Trade sales.
More info [click here](#).

Manawatu Round Up 2024

Friday, July 12 - Sunday, July 14. Ashhurst
Village Centre Manawatu. Come along for
one of the best Woodworking Weekends.
Contact Keith Betteridge 021 02720420 or
[Email](#) . More info [click here](#)



Guild monthly meeting

Lawson Worsnop spoke of his love of collecting old hand tools which he gives new life to, refashioning the likes of chisels and turning new handles if needed. Finding tools these days is more challenging but does give him an excuse to go for a drive to the Waikato and surrounds.

Making tools to allows Lawson to carve Japanese netsukes, miniature carvings, which are now very collectable. Originally netsuke provided a simple toggle device to secure clothing and containers. There are different shapes, the most common being katabori, which is a carving in the round of people, animals, birds etc.



Example of a netsuke with measure to show size



Carving tools for netsuke



Selection of tools Lawson has transformed



Lawson using a chainsaw sharpening wheel to shape a tool

Lawson creates a bevel using the sanding belt and finishes the tool using a MDF disc on the lathe and chrome polish. Final sharpening is done with a leather strop.



Mike demonstrated his knife sharpening technique on the lathe

Mike McCarthy also gave handy hints and tips for segmented turning, how he makes knobs using a drill press and his food safe finishes for chopping boards.

Guild monthly meeting



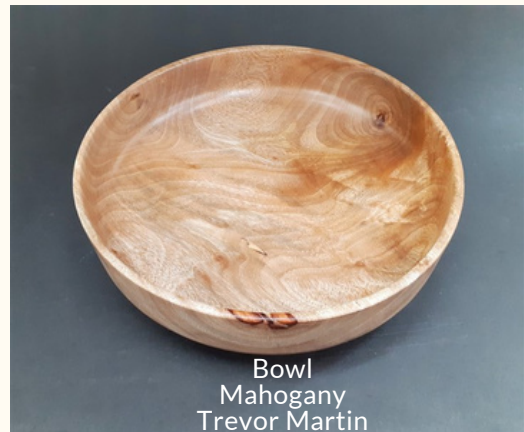
Mike's modified jig to cut a straight edge on the table saw



Bowl
Swamp kauri
Roy Tregligas



The impressive display at Saturday's meeting shows the array of work club members are doing



Bowl
Mahogany
Trevor Martin



Adze blade
West Coast pounamu
Mounted on swamp kauri
Garry Webber



Chopping board
Black walnut, mahogany, maple,
spalted polar
Mike Buck



Flowers in vase
Derek Kerwood

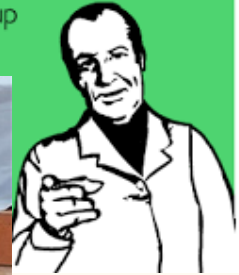
Woodcrafter Groups

Woodturning Group

The turners have been busy with the regular attendees. Mel has been having fun with his pot stirring and Alistair and George still in tulip production mode. There was no monthly meeting.

Greg Taylor and Tony Phillips
Coordinators

I see you've brought your extra large spoon to stir up trouble with today...



Stirring the pot
Gift for a friend
Mel Yeates



Bowl
Rewarewa
David Monk



The tulips have gone international- here are 3
in a Milwaukee, Wisconsin garden



Decorated bowl
Firewood
Mel Yeates



Last month's bowl now
completed
Brian Wansbrough



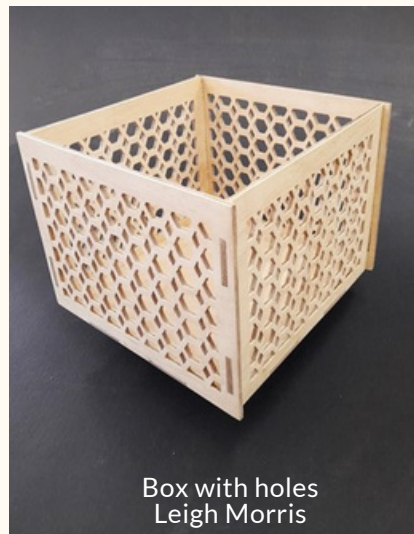
Scrollsaw , Intarsia & Marquetry Group



Butterfly box
Gavin Bell



Bird
June Tito



Box with holes
Leigh Morris



Duncan Campbell
concentrating on his
scrollsaw project



Psychedelia
Roy Tregligas



Candlestick
Leigh Morris



Fred Delahunty
hard at work



Automata
Jacob von Holzen



Duncan Campbell
Coordinator

Carvers' Group

The carving group have all been busy with a variety of work during April. John showed us his latest abstract carving of a dog. Plans for carving a horse's head changed when John found a bark inclusion hence the carved dog.

Ken Brangwynne's white swan was a joint effort with the pounamu base polished by Garry Webber to 3000 grit. Rust-Oleum's spray lacquer in gloss produced the exquisite ceramic like finish you can see in Ken's carving.

I always enjoy seeing the way the members of our club explore multiple facets of woodcrafting and April 2024 has been a typical month. The way we have the workshop setup for use by different woodcrafting groups certainly helps members explore different areas. Roger, one of our newer carveras Ken's and doing a great job.

Jean's current project is a relief carving of a fish swimming in a pool, while Geoff has begun working on another walking stick.

Phil Hansen
Coordinator

White swan
Kauri, acrylic paint, clear
lacquer
Mounted on pounamu
Ken Brangwynne

Design from Andrew
Thomas's book *Carving in
the Round*



Bowl
Gum burl (burr)
Ken Brangwynne



Dog
unknown timber
John Harrison



Open Workshop Group

Remember that dates for the open workshop have changed and the workshop is now only on every second and fourth Saturday of the month. There are no more Tuesday evenings. However, if you can't make it to Saturdays, why not try the Thursday morning group.

Come along, learn new skills, and Bill will help you with your projects.

Bill Wilson
Coordinator



DON'T FORGET

**Saturday April 27th
for next Open Workshop**

Wood Prep Group

Roy Tregligas and Mike Buck run the Wood Prep group every Thursday morning and are there to help members with their projects, solve particular problems members may have, and show members how to use workshop equipment. You can see from the photos that the group has been busy of late.

Roy Tregligas and Mike Buck
Coordinators



Glenn Whittaker
on the scrollsaw



Mike helping Millie
Watson with her
side table



Louisa Allwood
working on her
window strut



Garry Webber
cutting out his
mock violin made
of fiddleback

May Calendar

Carvers	9.30am	6th/13th/20th/27th
Turners	9.30am	7th/14th/21st/28th
Wood Prep	9.30am	2nd/9th/16th/23rd/30th
Scrollsawers	9.30am	1st/15th
Open Workshop	9.30am	Saturday, 11th/25th
Guild AGM	1.30pm	Saturday, 20th



GUILD DIRECTORY

President	Phil Hansen
Vice President	Greg Taylor
Secretary	Louisa Allwood
Treasurer	Margaret Dekker
Committee	Colin King
	Tony Phillips
Newsletter Editor	Jenny Bowker
Membership Secretary	Louisa Allwood
Librarian	TBD
Workshop Maintenance	Tony Phillips
Wood Officer	Mike McCarthy
BBQ Officer	Colin Milne
Caretaker Supplies	Louisa Allwood

Duty Roster

May	AGM
June	Scrollsaw
July	Wood Prep
August	Carvers
September		Turners

CONTACT US



ADDRESS

3 Cherokee Place
Mount Maunganui

P O Box 9270
Greerton
Tauranga 3142



EMAIL

tgawoodcrafters@gmail.com



WEBSITE

<http://taurangawoodcrafters.org>



FACEBOOK

<https://facebook.com/taurangawoodcrafters/>

Thank you for your support!

We are grateful to the following businesses who support the Tauranga Woodcrafters Guild.

carbatec
THE HOME OF WOODWORKING

Supplier of...

pfeil *Robert* *Serby* **nova** **SawStop** **LAGUNA**

AND SO MANY MORE!

Contact us:
110 Harris Road,
East Tamaki, Auckland
Phone: 0800 444 329
www.carbatec.co.nz
Follow us on Facebook!
@CarbatecNZ



www.timberlywoodturning.co.nz

YOUR ONE STOP ONLINE SHOP

Phone 09 297 7051 Mobile 021 998 493 Email timberly@xtra.co.nz

320 Hunua Road Papakura, Auckland, New Zealand



WoodCut Turning Tools • Nova Lathes New and Used
• Pen and Craft Kits • Finishes • Pyrography •
Timberly innovated accessories • Full turning packages quoted

Treeworkx.sandpaper

Ron & Heather Wallace-Wells

Phone: 07 888 4396

Mobile: 027 510 4276

Email: treeworkx@xtra.co.nz

Address: 3 Puriri Place, Matamata 3400, New Zealand



Providing the means for the Guild to create and clean up sawdust and woodchips since 2006.

Machinery and Powertool Centre

37 Hewletts Road,

Mt Maunganui

Phone: +64-7-574 9980

woodnwork@xtra.co.nz

<http://www.woodtools.co.nz>

Treeworkx.wood

Graham Oliver

Phone: 07 888 3800

Email: goliver@no8wireless.co.nz

Address: 46 Paratu Road, RD Walton 3475, New Zealand

J-Max

Sharpening Services Ltd

- sawblades
- bandsaw blades
- router bits

99 Maleme Street
Greerton
Tauranga

07 541 1655

027 555 0465

j-maxtooling@xtra.co.nz