

FEBRUARY 2024, ISSUE 380

Woodchat

Tauranga Woodcrafters' Guild Monthly E-Newsletter



Member of the National Association of Woodworkers NZ



Black swan
Ken Brangwynne

Macrocarpa, matt black paint, gloss acrylic spray
Mounted on pounamu, cut and polished by Garry
Webber to 3000 grit to create a lake.

President's Report

快樂嘅木工。



I hope everyone is keeping well. To all those members who are unwell, or recovering from illness, our thoughts are with you and we all wish you a speedy recovery.



Welcome to 4 new members this month - Millie Watson, Alex Le Roux, Willena Le Roux and Louis Le Roux.

Our sponsors



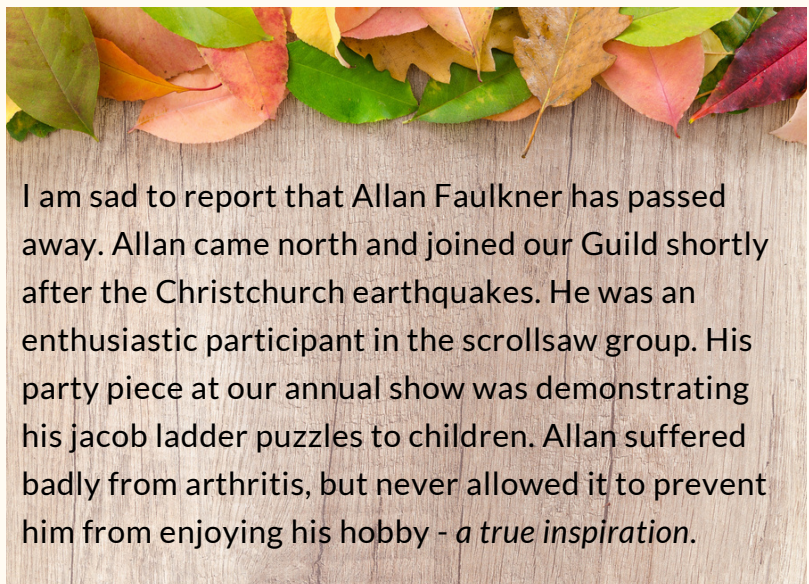
Lottery Grants Board
FUNDS FOR YOUR COMMUNITY





Long Term Plan Submission

Last week I presented our case against increasing leaseholder fees to the TCC Commissioners at a Council Plan hearing. The draft Long Term Plan 2024-2034 proposes to raise our site lease fees from \$2.00 m² to \$6.00 m² and affects all clubs including sportsgrounds etc in the Tauranga area.



I am sad to report that Allan Faulkner has passed away. Allan came north and joined our Guild shortly after the Christchurch earthquakes. He was an enthusiastic participant in the scrollsaw group. His party piece at our annual show was demonstrating his jacob ladder puzzles to children. Allan suffered badly from arthritis, but never allowed it to prevent him from enjoying his hobby - *a true inspiration*.



TOLO Christmas sales 2024

The committee plans to have a Christmas sales and exhibition of members' work at The Old Library Omokoroa (TOLO) this November. Please get woodcrafting to exhibit and sell your work. There will be more info to come.





"Our legal department wants us to download their new software. It translates gobbledygook to mumbo jumbo."

Constitution Change Update

The new Incorporated Societies Act, says we must have constitution changes in place by October 2025. Mark von Dadelszen, the solicitor working for NAW, has developed a generic template for the NAW member guilds. The template only needs us to define guild specific parameters, such as the club name, month of the AGM etc.

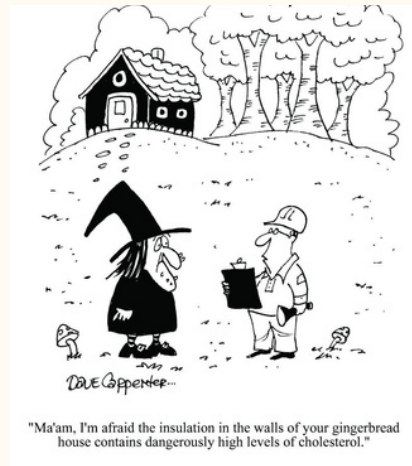


Short Woodcrafting Course

This is a heads-up that Bill Wilson is planning to pilot a short woodcrafting course (to make a cutting board). We will be aiming this at inexperienced new members, and potentially via publicity to members of the public. The class size is likely to be limited to 6 participants.

Workshop WOF

Inspection of our workshop has been completed and the building warrant of fitness renewed for 2024/25



"Ma'am, I'm afraid the insulation in the walls of your gingerbread house contains dangerously high levels of cholesterol."



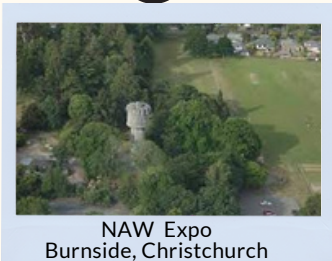
In a single week this month, someone managed to wear out the cutting teeth on two brand new blades when using the Sheppach bandsaw. This type of wear occurs when the blade overheats by:

- cutting too fast
- cutting hardwood timber
- trying to cut a curved line etc.

If smoke starts curling off the blade - STOP what you are doing and discuss with your group leader(s).



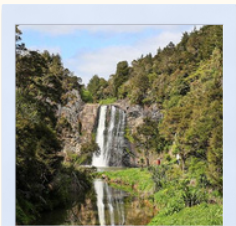
Upcoming events



NAW Expo
Burnside, Christchurch



South Auckland
Woodturners, Hunua



Otago Woodturners
Whare Flat, Dunedin



Jamboree
Lake Taupo

- **South Auckland Woodturners**

Participation

Friday, March 15, 8am - Sunday, March 17, 5pm. Camp Adair, Hunua. More info [click here](#).

- **Taupo Woodturners Jamboree**

Friday, April 26, 9am - Sunday, April 28, 3pm. Lake Taupo. Contact Angela Zajonkowski for more [info](#).

- **Otago Woodturners Guild**

Friday, April 12, 12md-Sunday, April 14, 12md. Waiora Turn Inn, Whare Flat, Dunedin. Registrations close March 20. Contact Leah Jeglgersma for more [info](#).

- **National Wood Expo**

Saturday, May 25, 8.30am-Sunday, May 26, 2.15pm. Burnside Bowling Club, Christchurch. 7 demonstrators. Gala dinner \$45. Members \$30 per day. Catered morning and afternoon teas and lunch. Trade sales. Info [click here](#)

Guild monthly meeting

Mike Buck presented for the Scrollsaw group this month. He guided us through the steps he used in making a jewellery box with a wave inlay on top of the lid.

Mike's meticulous attention to detail is awe inspiring. He is constantly problem solving, adapting tools and machinery to fit, such as his modified sled. Mike began with the wave pattern for the lid first after making a pattern from his drawings which are done to scale. He then traced the pattern onto the wood.

Mike's friends:

- masking and double sided tape
- CMT cutters-best quality, longevity
- Triton router/Japanese flush cut saw
- French curves template set
- 60 gauge teeth for x-cutting



Jewellery box with a wave top insert
Swamp kauri, maple,
black walnut



The interior of the box in detail



Mike mocks up the box on paper first.
The box legs are shown on top of the
box drawings/measurements.



Allan made his own for a
fraction of the cost of a new one



Bowl
Flowering cherry
Doug St George

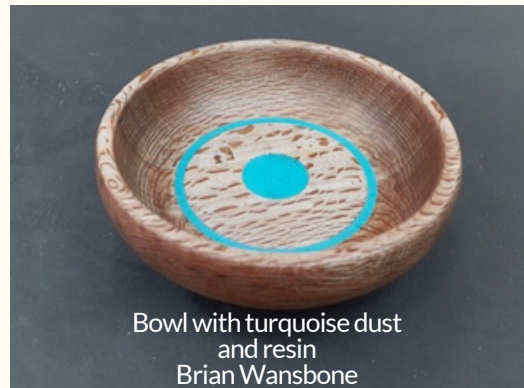
Woodcrafter Groups

Woodturners' Group

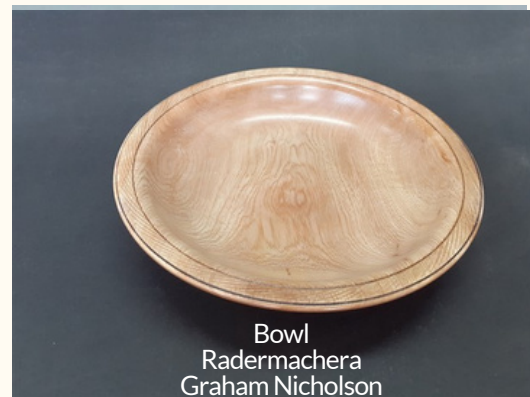
This month there was no group meeting since it fell on a public holiday - Waitangi Day.

Attendance has continued to be steady. Alistair, Mel and George continue with the large tulips for the Parkinson's Society.

Greg Taylor and Tony Phillips
Coordinators



Bowl with turquoise dust and resin
Brian Wansbone



Bowl
Radermachera
Graham Nicholson



Segmented chopping board
Mike McCarthy



Oval bowl with legs
from Derek's challenge - Banksia
George Winters



George Winters with a beautiful bunch of finished tulips



Oval bowl with legs
from Derek's challenge
Greg Taylor

Carvers' Group

Good attendance continued in February and with new members joining. Sadly Ivan Watchorn has not been able to attend due to his deteriorating vision. Ivan has been a mainstay of the carvers for decades and many carvers have benefitted from Ivan's instruction.

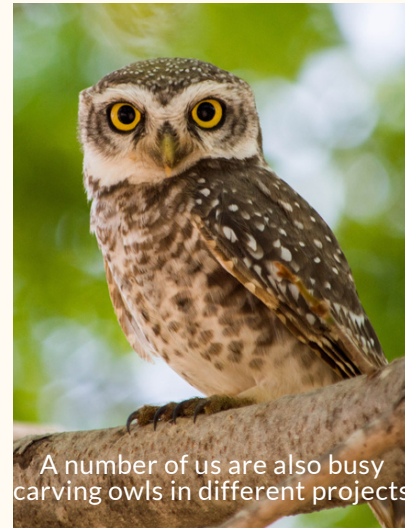
Earlier this year the carvers were given linden branches by Barwick's friend Clarrie Brake from the Ashburton Guild. Linden is considered possibly the very best carving timber in the world. The tree, which was probably planted around 1890, had to be felled due to cracking and the risk to property.



Barwick, Geoff, Kent and Phil cut the the branches into carving slabs.



Allosaurus skull
Cherry
Phil Hansen
Finish: sanding sealer & polyurethane.



A number of us are also busy carving owls in different projects

Q. What is a group of owls commonly called?



Owl
Silver pine
Geoff Brann



Owl
Barwick Harding
Black walnut



Horse's head
Garry Webber

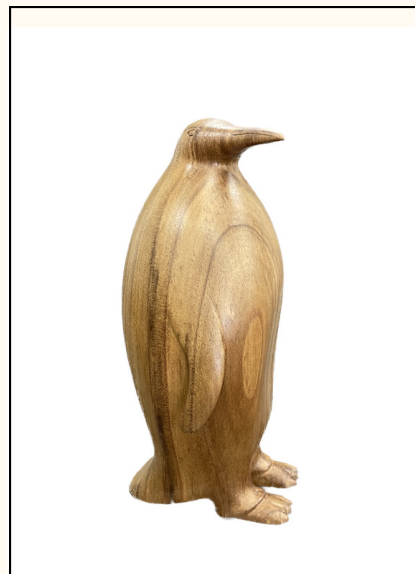
funny →



Garry's story of going into a chemist to buy false eyelashes for a horse had everyone in stitches.



Planet
Macrocarpa
Ken Brangwynne
Planet - mix of resin/ turned timber
Mounted on macrocarpa.



Emperor Penguin
Black walnut
Fraser Pengelly
Fraser referenced *Carving in the Round* by Andrew Thomas for this project

Meanwhile Kent is busy sculpting his own abstract design, and Ken is carving a large mixed media relief carving on which he is placing metalwork insects.

Phil Hansen
Coordinator

Wood Prep Group

Roy Tregligas and Mike Buck run the Wood Prep group every Thursday morning and are there to help members with their projects, solve particular problems members may have, and show members how to use workshop equipment.



Scrollsaw , Intarsia & Marquetry Group



Marquetry
Jacob von Holzen



Guitar plectrum (pick) cases
Roger Haybittle



Wall bracket
June Tito



Box and basket
Leigh Morris

The scroll saw group was down in numbers mid month with a few away, however the rest were busy with their different projects. Sadly we have just lost Allan Faulkner from our group, with his funeral yesterday.

Duncan Campbell/Allan Curtis

Open Workshop Group

The open workshop continues on every second and fourth Tuesday and Saturday of the month. Come along, learn new skills, and Bill and Hob will help you with your projects.

Bill Wilson and Hob Thompson
Coordinators



Kent working on one of his many projects.

March Calendar

Carvers	9.30am	4th/11th/18th/25th
Turners	9.30am	5th/12th/19th/26th
Wood Prep	9.30am	7th/14th/21st/28th
Scrollsawers	9.30am	6th/20th
Open Workshop	6.30pm	Tuesday, 12th/26th
	9.30am	Saturday, 9th/30th
Guild Meeting	1.30pm	Saturday, 16th



GUILD DIRECTORY

President	Phil Hansen
Vice President	Greg Taylor
Secretary	Louisa Allwood
Treasurer	Margaret Dekker
Committee	Colin King
	Tony Phillips
Newsletter Editor	Jenny Bowker
Membership Secretary	Louisa Allwood
Librarian	TBD
Workshop Maintenance	Tony Phillips
Wood Officer	Mike McCarthy
BBQ Officer	Colin Milne
Caretaker Supplies	Louisa Allwood

Duty Roster

March	Wood Prep
April	Carvers
May	Turners

Joke from Pam Hansen

The Bathtub Test

During a visit to my doctor, I asked him, "How do you determine whether or not an older person should be put in an old age home?"

"Well," he said, "we fill up a bathtub, then we offer a teaspoon, a teacup and a bucket to the person and ask them to empty the bathtub."

...

"Oh, I understand," I said. "A normal person would use the bucket because it is bigger than the spoon or the teacup."

"No" he said "A normal person would pull the plug. Do you want a bed near the window?"

ARE YOU GOING TO PASS THIS ON ... OR DO YOU WANT THE BED NEXT TO MINE?

CONTACT US



ADDRESS

3 Cherokee Place
Mount Maunganui

P O Box 9270
Greerton
Tauranga 3142



EMAIL

tgawoodcrafters@gmail.com



WEBSITE

http://taurangawoodcrafters.org



FACEBOOK

https://facebook.com/taurangawoodcrafters/

Thank you for your support!

We are grateful to the following businesses who support the Tauranga Woodcrafters Guild.



Supplier of...

Robert Pfeil **Robert Serby** **nova** **SawStop** **LAGUNA**

AND SO MANY MORE!

Contact us:
110 Harris Road,
East Tamaki, Auckland
Phone: 0800 444 329
www.carbatec.co.nz
Follow us on Facebook!
@CarbatecNZ



www.timberlywoodturning.co.nz

YOUR ONE STOP ONLINE SHOP

Phone 09 297 7051 Mobile 021 998 493 Email timberly@xtra.co.nz

320 Hunua Road Papakura, Auckland, New Zealand



WoodCut Turning Tools • Nova Lathes New and Used
• Pen and Craft Kits • Finishes • Pyrography •
Timberly innovated accessories • Full turning packages quoted

Treeworkx.sandpaper

Ron & Heather Wallace-Wells

Phone: 07 888 4396

Mobile: 027 510 4276

Email: treeworkx@xtra.co.nz

Address: 3 Puriri Place, Matamata 3400, New Zealand



Providing the means for the Guild to create and clean up sawdust and woodchips since 2006.

Machinery and Powertool Centre

37 Hewletts Road,

Mt Maunganui

Phone: +64-7-574 9980

woodnwork@xtra.co.nz

<http://www.woodtools.co.nz>

Treeworkx.wood

Graham Oliver

Phone: 07 888 3800

Email: goliver@no8wireless.co.nz

Address: 46 Paratu Road, RD Walton 3475, New Zealand

J-Max

Sharpening Service

Ltd

- sawblades
- bandsaw blades
- router bits

99 Maleme Street

Greerton

Tauranga

07 541 1655

027 555 0465

j-maxtooling@xtra.co.nz