



Jacob von Holzen's mastery of marquetrie displayed

THE PRESIDENT'S PAPERS

Covid Status: The Workshop has reopened for group meetings and also for the Guild's monthly meetings, under Covid Level 2. In accordance with the government's September 2021 public health order (PHO) it is mandatory for everyone to scan in using our Covid QR scanning code and/or sign-in using the register on the table inside the door. Our QR code is pinned to the notice board above the sign-in table. Members should stay away if you are unwell with a cold or flu and get yourself tested. We support members who wish to wear a face mask inside the workshop. However, the committee draws members attention to Clause 31 of the latest Public Health Order, which says it is not compulsory for voluntary or not for profit recreational & social groups to wear face masks, or to exercise the 2m physical distancing rules (inside the workshop).

Members Welfare: To all our members who are unwell, or are recovering from illness, our thoughts are with you and we all wish you a speedy recovery.

September Full Guild Meeting: It was great to have such a large turn out for September full guild meeting. Jim Sutherland provided everyone with an overview of the new AV and video camera setup. It is a step change upwards from what we have had. Two 4K definition video cameras on moveable support frames have been combined with a remotely controlled switch box. This allows the view shown on our existing 65" TV to be easily adjusted to suit the demonstration and the audience's needs. Allan Curtis followed up with a review of the use of the new Automated External Defibrillator unit. Our intention is to

a member club of the national association of woodworkers inc.



mount the unit on the wall in the lunch room so it is clearly visible and accessible if we have a heart attack emergency in the workshop. The battery in the unit is good for 5 years. Please familiarise yourself with the unit and the “how to” users video on this link <https://youtu.be/ObbBaQcUwW4>

2021 Show Update: We were extremely disappointed to receive news that our Show venue is being commandeered from 1st October 2021 by the BOP Health Board to use as a Covid vaccination centre. After trying unsuccessfully to find an alternative venue which was available for 19-21st November we reluctantly made the decision to cancel our show for 2021. We will focus on the 2022 Show, which we plan to hold on November 17- 20th in conjunction with the BOP Garden and Art Festival. The show committee are in the process of unpicking all the arrangements we had made for the 2021 show. The Guild has lost around \$402 which had already been spent on new date labels for our street hoardings.

Taranaki Guild November 2021 Woodcraft Festival: This is a reminder that the Taranaki Guild has their Woodcrafter Festival planned for November 27th/28th 2021. Details have already been circulated to all members by email.

Covid Vaccinations: The committee noted that some discussion has begun in the media about whether NZ will eventually move to having a Covid vaccination “passport” system. We are not clear where this will go, or how it might effect voluntary social organisations like our own.

Workshop Maintenance: There are no signifiant maintenance issues to report in September, but we have been in a lockdown situation and group activities are just restarting. There is a blown fluorescent bulb in the ceiling and a power supply tidy-up issue relating to using the new AV system which will be dealt with shortly.

The Committee has approved the purchase of new 5 micron rated filter bags for our two dust collectors and this should significantly reduce the dust that escapes into the workshop.

There have been instances of people using the lathes with the morse taper drive centre gripped by the chuck jaws. This practice scores the surface of the drive centre.

The only way to use the drive centre is by unscrewing the chuck from the drive head and inserting the drive centre inside the drive shaft that has the appropriate female morse taper inside.

This friction fit is enough to drive your work piece.

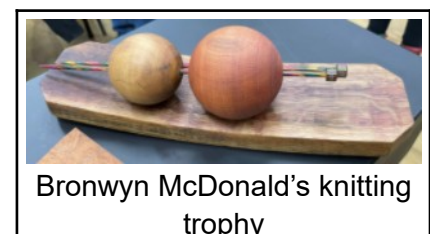
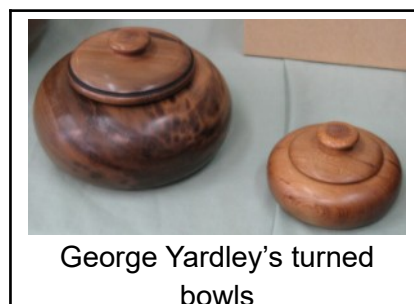
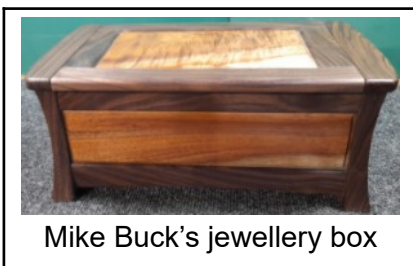
Once you have completed your article, remove the drive centre by way of inserting the knock out bar inside the drive shaft and tapping it out (have your hand under the drive spur to catch it on the way out). Then replace the chuck onto the threaded shaft and lightly nip it up against the bearing face.

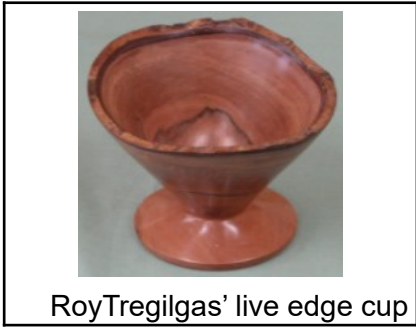
Kia kaha

Phil Hansen, President.

General Report

Members have been very busy in their workshops over lockdown and presented a wide range of finely crafted projects. Keep up the awesome work.

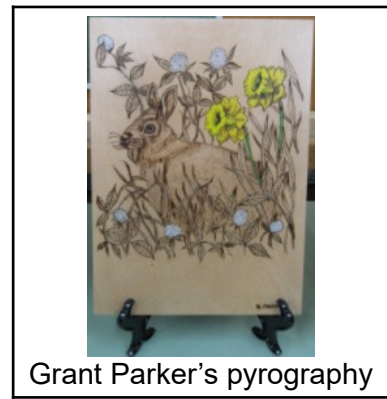




Roy Tregilgas' live edge cup



Greg Taylor's eccentric bowl



Grant Parker's pyrography



Ian Dawkins' turning work



Mike Buck's gonks

Lion Foundation Grant



We are all very grateful for the grant from the Lion Foundation and Alan Sciascia has crafted a thank you to the Foundation by producing a few engraved bottle openers which he will send to them. He thinks that they would likely have a small bar or breakout room which they use for Friday night drinks or other functions. These may be useful to them and also show how their funding recipients appreciate their support.

Group Activities

Group 1: Woodcarvers

2nd and 4th Monday of the month: 9:30am – 3:00pm.

The carvers had our first group meeting in early September following the lowering of lockdown restrictions to Level 2. It was pleasing to find that we had almost full attendance. We welcomed back Jean Crabtree and Tom Coomber from their recent illnesses.

Quite a few people took advantage of our first meeting after lockdown to prepare timber for their new

carving projects. The inability of us all to get into the workshop to use equipment has been one of the biggest frustrations of the lockdown situation. Some of us even had to resort to hand sawing while in lockdown! When you are roughing out any carving it makes a huge difference when you can square up timber blocks on the table saw and then, having drawn the front and side elevations onto the wood, use a bandsaw to cut out the shape.

Frazer Pengelly was very focused on making himself a new carving mallet at the September meeting. He had a urethane roller from a conveyor and fitted this with a turned wooden handle to form his new mallet. Urethane headed mallets have some advantages over the 100% wooden mallets. Urethane is shock absorbent and absorbs punishment so the wrist joint of the carver is less fatigued, chisel heads last longer and there is reduced noise while working.

People brought along a variety of pieces they had been working on during Covid lockdown. In particular: Chris Barton had completed an albatross carving which is intended as a gift for his son who is in the navy; Frazer Pengelly had two of his latest relief carvings; while Barwick Harding showed off a large collection of Swedish Tomte carvings.

As I understand the term Tomte from "Mr Google" the Tomte figurine is a very Swedish element of the Swedish Christmas tradition. Supposedly it represents an "impish loner who often wears a pointy cap pulled over his eyes, resides close to people (in contrast to Santa who lives at the North Pole) in places such as the corner of garden sheds, and hangs out with feral cats". Barwick said he had been aiming to have 30 of his Tomte carvings ready for the show and had been whittling away in his chair while watching TV. Even though our 2021 show is now postponed until 2022, the Tomte have ensured Barwick has had plenty of practice with his carving knives. By the way, Barwick and Sue's little dog took charge and has moved any "feral cats" off to other homes.



Barwick Harding's Tomte



Frazer Pengelly's Polynesian inspired relief carving



Chris Barton's albatross



Phil Hansen's pyrography on falcon prior to painting

Phil Hansen 027 705 0408, for Frazer Pengelly

Group 4: Woodturners

Group 4 Hands on Turning: 1st Tuesday at 9:30am

Group 4 Monthly Turners Meeting: 1st Tuesday at 1:30pm

Group 4 Hands on Turning: 4th Wednesday at 9.30am

Due to Covid restrictions we have not run the group 4 session this month (we went on to level 3 just after the date when we could have had our Tuesday session)

Our next hands on session will be Wednesday 22nd September.

Wearing of masks is recommended both for Covid and also for dust inhalation prevention.

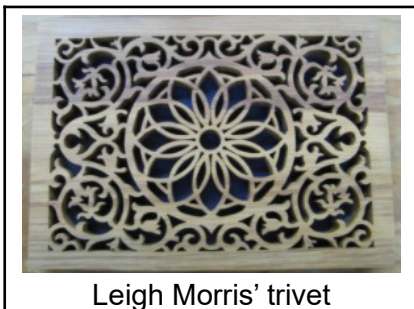
Lawson Worsnop 027 357 2430

Group Five: Scroll Saw, Marquetry and Intarsia

1st and 3rd Wednesdays at 9.30am

All nine Guild scroll saws including the two latest acquisitions together with one member machine were operating with three group members unable to attend. Some beautiful craft pieces created by members during lockdown were on display including a further three classic marquetry pictures in his current series – 9, 10 and 11 – displayed by Jacob – Gavin's classic comment, 'Jacob just continues to improve'.

A number of lattice scroll cut boxes highlighted the quality and high standard of the work individuals have reached. Some of the work currently under way continues to push boundaries, encouraging others to follow and demonstrate the versatility of the scroll saw.



Leigh Morris' trivet



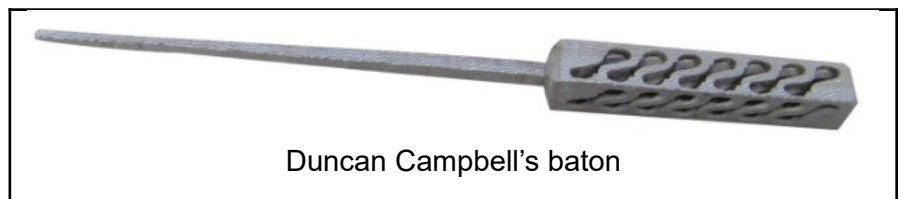
Allan Curtis' Christmas decoration



Gavin Bell's Indian head



Duncan Campbell's decorative box



Duncan Campbell's baton

Glenn Whittaker 54809

Allan's Some things never change

This was published in a local Alaskan newspaper at the time of the 1918 flu

Do's and Don't's for Influenza Prevention.
(Douglas Island News.)

Wear a mask.

Live a clean, healthy life.

Keep the pores open – that is bathe frequently.

Wash your hands before each meal.

Live in an abundance of fresh air, day and night.

Keep warm.

Get plenty of sleep.

Gargle frequently (and always after having been out) with a solution of salt in water. (Half teaspoon of salt to one glass – eight ounces – of water).

Report early symptoms to the doctor at once.

Respect the quarantine regulations.

Avoid crowds. You can get the influenza only by being near some one who is infected.

Avoid persons who sneeze or cough.

Do not neglect your mask.

Do not disregard the advice of a specialist just because you do not understand.

Do not disregard the rights of a community – obey cheerfully the rules issued by the authorities.

Do not think you are entitled to special privileges.

Do not go near other people if you have a cold or fever – you may expose them to the influenza and death. See the doctor.

Do not think it is impossible for you to get or transmit influenza.

Keep your hands out of your mouth.

Do not cough or sneeze in the open.

Do not use a public towel or drinking cup.

Do not visit the sick or handle articles from the sick room.

DON'T WORRY.

The Leading Cause Of Injury In Old Men Is



Rowhit

Them Thinking They Are Still Young Men

GUILD DIRECTORY

President	Phil Hansen	027 705 0408
Vice President	Greg Taylor	021 992 446
Secretary	Alan Sciascia	027 492 2475
Treasurer	Margaret Dekker	543 0980
Newsletter & Webmaster	Allan Curtis	022 517 0415
Committee:	Frazer Pengelly	07 570 6282
	Glen Whittaker	548 0987
	Lawson Worsnop	027 357 2430
	Jake Stemmer	021 160 6380
Membership Secretary	Alan Sciascia	027 492 2475
Librarian	Chris Barton	021 112 2857
Workshop Maintenance	Lawson Worsnop	027 357 2430
Wood Officer	Mike McCarthy	575 2991
BBQ Officer	Colin Milne	543 0358
Caretaker	TBD	
Caretaker Supplies	Stephanie Simpson	
Cleaner	TBD	

ADDRESSES

PO Box 9270, Greerton. TAURANGA 3142

Workshop 3 Cherokee Place, Mt Maunganui

Website <http://www.taurangawoodcrafters.org/>

Facebook <https://www.facebook.com/taurangawoodcrafters/>

Email tgawoodcrafters@gmail.com

DUTY ROSTER – 6 MONTH LOOK AHEAD

Oct 2021	Group 6&7
Nov 2021	Group 1
Dec 2021	Group 4
Jan 2022	Group 5
Feb 2022	Group 6&7
Mar 2022	Group 1
Apr 2022	Group 4
May 2022	Group 5

GUILD CALENDAR FOR October 2021

Date	Time	Group	Activity
Tue 5th	9:30 AM	4	Hands on Turning
Tue 5th	1:30 PM	4	Turners
Wed 6th	9:30 AM	5	Scroll Sawyers
Sat 9th	9:30 AM	6	Open Workshop
Mon 11th	9:30 AM	1	Carvers
Wed 13th	6:30 PM	6	Open Workshop
Sat 16th	11:00 AM		Committee Meeting
Sat 16th	1:30 PM		Guild Meeting
Wed 20th	9:30 AM	1	Scroll Sawyers
Sat 23rd	9:30 AM	6	Open Workshop
Mon 25th	9:30 AM	1	Carvers
Wed 27th	9:30 AM	4	Hands on Turning
Wed 27th	6:30 PM	6	Open Workshop

www.timberlywoodturning.co.nz

Timberly
Textura



TERRY SCOTT
NZ Agent for
BURNMASTER®
Also
Woodcut
TOOLS LIMITED

STARBOND
CA GLUE

See website for more

Contact: timberly@xtra.co.nz for an info sheet or ph: (09) 297 7051

Remember, if I cannot break it, no-one can!

WE ARE GRATEFUL TO OUR
ADVERTISERS FOR THEIR
SUPPORT AND THE SERVICES
THEY PROVIDE AND WE ASK
OUR MEMBERS TO SUPPORT
THEM

J-Max

**Sharpening Service
Ltd**

Your supplier of
sawblades
Bandsaw Blades
Router Bits

99 Maleme Street Tauranga
Phone 07 541 1655
Fax 07 541 1652

Treeworkx.sandpaper

Ron & Heather Wallace-Wells

Email: treeworkx@xtra.co.nz Phone: 0-7-888 4396
Address: 3 Puriri Place, Matamata 3400, New Zealand

Treeworkx.wood

Graham Oliver

email: goliver@no8wireless.co.nz Phone: 0-7-888 3800
Address: 469 Paratu Road, RD, Walton 3475, New Zealand

CARBA-TEC **noVA™**
TOOLS FOR WOOD

NOW AVAILABLE AT CARBA-TEC® NZ

NOVA™ congratulates Carba-Tec® NZ Ltd on their NEW exclusive
NOVA™ distributorship in New Zealand.

NOVA™ products are now available throughout New Zealand online and via
catalogue, as well as through the Carba-Tec® extensive network of partner resellers.



Online and catalogue www.carbatec.co.nz

Or see their comprehensive showroom: 119 Rankin Rd, East Tamaki, Auckland
9:30am - 5:00pm Monday to Friday, 9:00am - 12:00pm Saturday
Ph 0800 444 329 or 01 274 9654 Fax 01 274 9655

**Machinery and
POWERTOOL**

MOUNT MAUNGANUI

1/130 Newton Street, Mt.
Maunganui 3116

Phone (07)574 9980 Fax (07) 574
99850

Proudly providing the means for the
Guild to create and clean up
sawdust and wood chips, since



2006.

**Ross FM300 Dust
Extractor \$499.00**