



Colin King's Bar Stools are the May 2020 work on the month.

THE PRESIDENT'S PAPERS

A number of members have been asking about when activities will be getting under way again with some saying they want to start now through to other saying they are dubious at starting at the present time.

Your Executive Committee are trying to make decisions about this on your behalf but we need to know your feelings about it. Your Group Leaders also need to know what you want to do. The Executive have a meeting scheduled for 30th May to make a decision and will factor in Government updates. What we need you to do is communicate with your Group Leaders before May 30th about what you want to do so they can advise the Executive to enable an informed decision. NOTE: Tell your Group Leaders. After the Executive makes the re-opening decision group start dates will be a Group decision.

Guild Officers and Leaders. You are all aware that a number of these people have indicated they will stepping down and will not be available for re-election. Nominations have been called for however it would be useful to know who is willing to stand. If you are prepared to take a turn at any of these positions please e-mail your nominations to the Secretary mel.yeates@kinect.co.nz

The resumption of the Thursday Schools Group and the Home School Group poses other issues. It is unlikely that the Thursday Group will resume this year and we will keep Home School resumption under review.

We have defined new club rules / protocol on numbers of members we can have in the workshop at any one time, sanitising etc. which will apply from when we resume. We have formulated these based on Government requirements.

a member club of the national association of woodworkers Inc.



The Annual General Meeting, which was due on 23rd May, 2020, has now been re-scheduled for 18th July, 2020 at 1.30p.m. Venue: Guild clubrooms. However, this date will depend on relaxation of the Alert level rules governing the number of people who can attend a meeting at any one time - this is currently 10 people.

I am aware of the desire and the need to resume normal activities as soon as possible but we need to do so in a safe and timely manner. This has been the prime consideration of the Executive Committee. I have prepared a protocol appropriate for Covid-19 Level 2 alert to enable members to resume activities. These have already been emailed to all of the membership.

It is to be hoped that we can resume Group meetings in June with Executive Meeting on the 20th June as usual. Of course, this depends on developments and continuing good Covid-19 news. We will be monitoring the situation. The Executive Committee have scheduled a meeting for 30th May to review the

situation.

Stay safe.

Slainte, George Yardley, President

GUILD DIRECTORY:

GUILD DIRECTORY:

President:	George Yardley	579 1460
Vice-President:	Greg Taylor	021 992446
Secretary:	Mel Yeates	573 8188
Treasurer:	Margaret Dekker	543 0980
Newsletter Editor:	Phil Hansen	543 4332
Committee:	Barwick Harding	544 9094
	Mike Buck	574 4525
	Japie Volschenk	542 3633
Membership Secretary:		
	Mel Yeates	573 8188
Librarian:	Marlene & Jenny	
Webmaster:	Phil Hansen	543 4332
Workshop Maintenance:		
	Mike Buck	574 4525
	Roy Tregilgas	027 640 3793
Wood Officer:	Mike McCarthy	575 2991
BBQ Officer:	Colin Milne	543 0358
Workshop Mgrs:	Mike Buck & Roy Tregilgas	

ADDRESSES:

P.O.Box 9270, Greerton, TAURANGA 3142

Workshop: 3 Cherokee Place, Mt. Maunganui

Website: www.taurangawoodcrafters.org

Facebook: <https://www.facebook.com/taurangawoodcrafters/>

MEETING REPORT

Financial Situations Group finances remain healthy. We are asking for the 2020/21 subscriptions to be paid because the club still has ongoing operating expenses to be paid even in lockdown. The financial review of the 2019/20 accounts is underway for the AGM.

Resumption of Group Meetings Group Leaders want to talk to all members in each of their groups to make a decision on a date for resumption of group meetings. Contact phone numbers are on this page. We can only have 10 people in the workshop at any one time under current Level 2 restrictions. Groups may need to divide into two and have separate meeting times until the Govt. limit of 10 people is lifted. Groups need to decide on this. The committee will discuss this feedback from members on May 30th and restart dates will be confirmed as soon as possible thereafter.

Subscriptions: Please remember that subscription payments are now due, and when you renew your subscription you must send the completed membership form with acceptance of the club rules and safety declaration to the Secretary mel.yeates@kinect.co.nz

The fees need to be ratified at the AGM meeting, but we cannot have that AGM until meetings until the limit of 10 people at a meeting is raised.

Individual member	\$95.00
If NAW member at time of paying	- \$10 Discount
If paid by the end of June	- \$ 5 Discount
If receiving the newsletter by email	- \$20 Discount

Individual sub. if all discounts apply	\$60.00
--	---------

Joint member (Active).	
75%. If all discounts apply	\$45.00
Joint member (Social) is	\$5.00
Junior Member is	\$20.00

Please pay to: Tauranga Woodcrafters Guild Account at Westpac 03-0435-0561886-00
Do not forget to include your name, or mail cheque to Tauranga Woodcrafters Guild P.O. Box 9270, Greerton, Tauranga.

Guild's Internet Site: This is functioning again.

June 20th Guild Meeting: There will be a Guild monthly meeting on June 20th at 1:30pm in the clubrooms BUT only if the Government raises the limit on the number of people who can attend meetings. If they don't raise this limit from 10 people, the June 20th monthly meeting will be deferred to July 18th.

Note: Group One - Carvers - are on Duty for the June 2020 meeting. If the June meeting is deferred then Group 1 will be on duty for the July meeting instead.

2020 Show: We are continuing with our planning for the November 2020 Show. The venue has been booked, the street advertising sites have been booked, and the text of an advertisement has been prepared and sent out to appear in the Creative Wood magazine.

Tauranga Woodcrafters Exhibition 2020

20th, 21st, 22nd November 2020
Doors will Open from 10am - 4pm

\$5 ENTRY
KIDS UNDER 15 FREE

Mount Sports Centre (Blake Park)
Cnr Maunganui Rd & Hull Rd

Webpage: <http://www.taurangawoodcrafters.org>
Facebook: <https://www.facebook.com/taurangawoodcrafters/>



Woodcraft Sales
Trade Stands

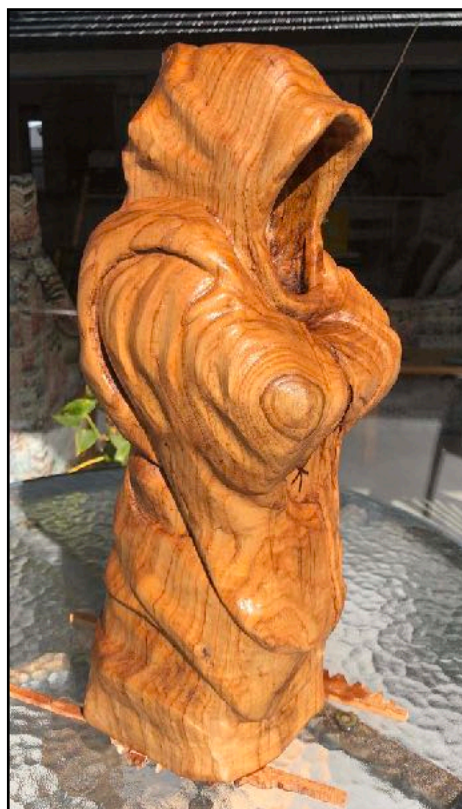


Demonstrations
Members Expo
Featured Exhibitors



Laminated Examples





GROUP ACTIVITIES

Group One: Woodcarvers 2nd & 4th Monday of the month, 9.30 am to 3.00pm.

Greetings Carvers. Please contact us with your views on your preferred restart date - June 8th would be our first "normal" scheduled day. I have completed a carving of a faceless monk. It was carved from a block of Sweet Chestnut and stands about 300mm tall - my wife says it will be a good doorstep.

Phil Hansen for Ivan Watchorn (07) 308 7914.

Group Woodturners:

Group 4 Hands on Turning - 1st Tuesday at 9:30am
Group 4 Monthly Turners Meeting - 1st Tuesday at 1:30pm
Group 4 Hands on Turning - 4th Wednesday at 9:30am

Greetings all turners – trust you have made the most of the lockdown and got a lot of those odd jobs done and succeeded in a few new challenges.

Restart – as we are restricted to 10 people to a meeting the current consensus from members feedback is that unless that restriction is

lifted we will plan to have our next full group meeting on Tuesday 7th July – Hands-on and tuition in the morning and meeting with a guest demonstrator in the afternoon. Hopefully we will be in a more settled position by then.



As we have only 4 members submit platters for this months challenge - how about we all make a real effort and produce a platter – of any description – for the July meeting? 100% participation would be a great outcome for the restart. I decided that I would go into the workshop and use the first piece of timber I find that I could make a platter from – it was a piece of laminated ply roof truss!! – came out not too bad and interesting to turn with hard and soft layers. So give anything a go!!

Another question has been asked by some members – do we need to continue with the Hands On and Tuition sessions? Personally I think they are valuable, but what do you think? Drop me an email with your yes/no, any other views on the restart date, and any good ideas for future meetings –maybe refer back to our planning list and pick something you can contribute to.
Happy turning

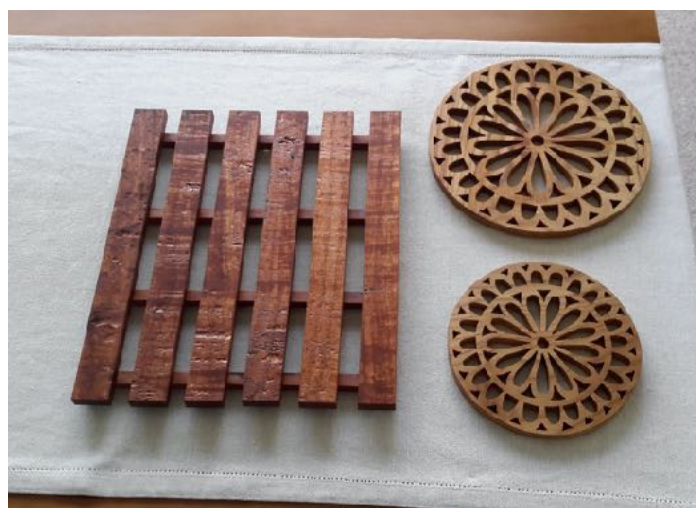
Colin King has spent time refining his bar stool design and produced these three beauties. He wanted a bar stool which was height adjustable to suit his indoor and outdoor situations where there are differing table heights. So he has developed a design with a removable insert to raise or lower the stool. A dowel peg on the side of the stool under the seat is used to hold the insert when not in use.

Greg Taylor 021 992 446

Group Five: Scroll Saw, Marquetry and Intarsia 1st and 3rd Wednesdays at 9.30am

The next “normal” date on our program for the Scrollsaw Group would be June 3rd. Scrollsaw We ask you to please contact Japie to give him your feedback on the restart date and how to handle the limit of 10 people for your group.

Duncan Campbell has not let the grass grow under his feet during lockdown and has produced a lot of new work, including skillets, scrollsaw boxes, a scrollsaw filigree image of an Indian and an automata of a cat and a mouse having fun!





Leigh Morris obviously got frustrated with not being able to go fishing during Covid-19 lockdown that he worked on his range of articulated fish designs and produced some great pieces.

Japie Volschenk 5423633

Group 6 & 7: Open Workshop and Toy Making

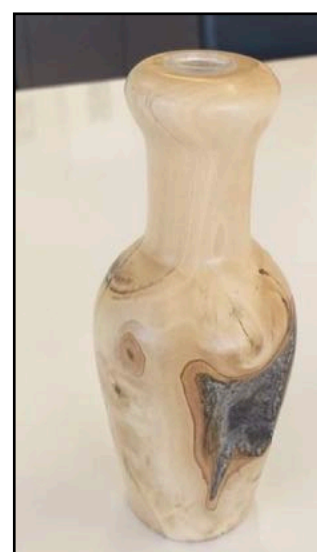
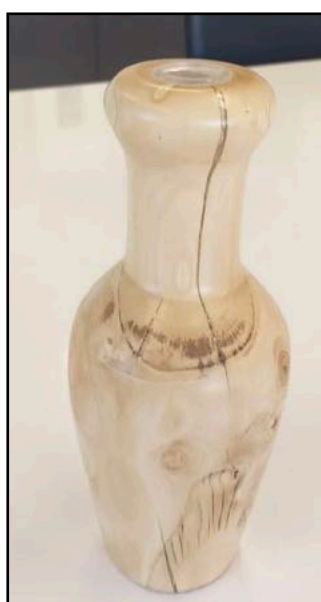
2nd and 4th Wed at 6.30pm, 2nd & 4th Sat at 9.30am (new finishing time on Saturdays is 3pm).

The Open Workshop group needs to contact Mike Buck and provide him with your feedback on the preferred restart date for group meetings.

Jake Stemmer has produced a lovely artistic vase from a wood stump which cleverly incorporates the natural elements of branches, knots and bark.

Mike has begun another model car. This one is a 1931 Cadillac Roadster.

Mike Buck 5744525



Thursday Students

The Thursday students program is suspended until further notice.

Homeschool Students

The Homeschool students program is suspended until further notice.

Mel Yeates 573 8188

Doric Coronavirus (Covid19) Advice

Fit ye need to dee:

- ▶ **Bide at hame.**
Stay at home.
- ▶ **Dinna be clarty, wash yer hans.**
Wash your hands for 20 seconds as soon as you get home.
- ▶ **Dinna touch yer fizog, een, neb or moo.**
Avoid touching your face, eyes, nose or mouth.
- ▶ **Only ging oot for yer messages, meds or te stretch yer shanks.**
Only go outside for food or health reasons or work (but only if you cannot work from home).
- ▶ **Bide 2 metres (6ft) awa fe folk at aa times. Dinna meet up wi ither folk, even freens, neebors or yer ain kin.**
If you go out, stay 2 metres (6ft) away from other people at all times. Do not meet others, even friends, neighbours or family.
- ▶ **If ye feel bilin' het, or hae a dry kinkin' hoast, dinna ging te yer GP or hospital.**
If you have a high temperature or a new, continuous cough, do not go to the doctor or hospital. Ring 111 or if it is life-threatening, dial 999.
- ▶ **Ye can smit aabody wi the virus even if ye dinna look peely-wally.**
You can spread the virus even if you don't have symptoms.
- ▶ **Ca canny aabody! Be careful everyone!**

 /bramblegraphics

Contributed by George Yardley

GUILD CALENDAR FOR JUNE 2020

Dates are still to be confirmed

DUTY ROSTER - 6 MONTH LOOK AHEAD

June 2020	Group 1
July 2020	Group 4
August 2020	Group 5
September 2020	Group 6 & 7
October 2020	Group 1
November 2020	Group 4

Last Word: from Phil Hansen

New Age / Post Covid-19 Entrepreneurs.



www.timberlywoodturning.co.nz

Timberly
Textura



STARBOND
CA GLUE

TERRY SCOTT
NZ Agent for
BURNMASTER®
Also



See website for more

Contact: timberly@xtra.co.nz for an info sheet or ph: (09) 297 7051

Remember, if I cannot break it, no-one can!

**WE ARE GRATEFUL TO OUR
ADVERTISERS FOR THEIR SUPPORT
AND THE SERVICES THEY PROVIDE
AND WE ASK OUR MEMBERS TO
SUPPORT THEM**

J-Max

**Sharpening Service
Ltd**

Your supplier of
sawblades
Bandsaw Blades
Router Bits

99 Maleme Street Tauranga
Phone 07 541 1655
Fax 07 541 1652

Treeworkx.sandpaper

Ron & Heather Wallace-Wells

Email: treeworkx@xtra.co.nz Phone: 0-7-888 4396
Address: 3 Puriri Place, Matamata 3400, New Zealand

Treeworkx.wood

Graham Oliver

email: goliver@no8wireless.co.nz Phone: 0-7-888 3800
Address: 469 Paratu Road, RD, Walton 3475, New Zealand

NOW AVAILABLE AT CARBA-TEC® NZ

NOVA™ congratulates Carba-Tec® NZ Ltd on their NEW exclusive NOVA™ distributorship in New Zealand.

NOVA™ products are now available throughout New Zealand online and via catalogue, as well as through the Carba-Tec® extensive network of partner resellers.

Online and catalogue www.carbatec.co.nz

Or see their comprehensive showroom: 110 Harris Rd, East Tamaki, Auckland
8:20am - 5:00pm Monday to Friday, 9:00am - 12:00pm Saturday
Ph 0930 444 329 or 09 274 9454 Fax 09 274 9455

**Machinery and
POWERTOOL**

MOUNT MAUNGANUI

**1/130 Newton Street, Mt.
Maunganui 3116**

**Phone (07)574 9980 Fax (07) 574
99850**

Proudly providing the means for the

**Guild to create and clean up
sawdust and wood chips, since**



2006.

**Ross FM300 Dust
Extractor \$499.00**