



Ivan Watchorn, our Carving Group Leader, also belongs to the Whakatane Woodcrafters where they have a "coffin club". Ivan's beautiful piece of work is made from Cryptomeria & is selected by the newsletter editor as our work item of the month.

### THE PRESIDENT'S PAPERS

Our situation, our country and the world have changed dramatically since I saw you last at the February meeting and I do not see it returning to as it was, in the foreseeable future. I sincerely hope that the measures undertaken in New Zealand to control and exterminate COVID-19 will permit a reduction in Alert Levels and allow an increasing resumption of social and economic activity. We all need this. Certainly we will feel the business and economic impact for some years.

I was fortunate to re-enter NZ from my two weeks in Hobart just before the self isolation requirement and return from my two weeks in the South Island and get essential supplies before the Lock Down commenced. Fortunately the sore throat and cough I picked up on the flight back from Australia was no more than that.

#### **So, where are at as far as the Guild is concerned.**

The Level 4 Alert shut down all activities and cancelled planned events and tours. Even when there is a reduction down to Level 2 we are still restricted because the recommendation for that is for high risk people and over 70's to remain at home. A large percentage of our membership falls in to that category and I believe the Guild would be irresponsible permitting a resumption of activities even at this level. Perhaps an allowance could be made for younger ages.

**So what is the situation regarding fees.** These are set at the Annual General Meeting and that has been deferred until an appropriate safe time. At the online Executive Meeting (held via Zoom) on the 18th April a recommendation was passed for the AGM that fees remain unchanged.

a member club of the national association of woodworkers Inc.



The 2020/2021 fees were due on 1st April, 2020 and you need to pay these, support the Guild, and be ready to resume activities when we are permitted. Should the AGM decide differently an adjustment will be made. The fees and how to pay them are shown below in this newsletter. The Guild's expenses continue.

**The Annual General Meeting** which was due to be held on 23rd May, 2020 was deferred at the Executive Meeting on 21st March. This will be rescheduled as soon as possible. The existing Officers and Executive Committee have agreed to continue until such time as the AGM meeting can be held.

**The Executive Committee** has set up an internet conference discussion tool - Zoom - so we can have on-line meetings. The first was held last Saturday and we will hold regular meeting as scheduled and special meetings as necessary.

**We will continue with a newsletter** as usual and I have suggested in between news flashes as required and as a means of regular communications with members. To do this we need more input from you. Tell us how you are coping, what you are doing and projects you are working on. Send photos and a story to Phil to co-ordinate. (Not that I think he is bored and needing something to do).

**Whether the Government elects to stay at Alert Level 4** or move down to Level 3 has little impact on our situation, but we will review as things change and keep you informed. Any input from you would be great.

*I hope this finds you all in good health and coping with isolation.  
Stay well, stay safe. That's it for now.*

*Slainte, George Yardley, President*

## Subscriptions: Now due for payment:

Individual member	\$95.00
If NAW member at time of paying	- \$10 Discount
If paid by the end of June	- \$5 Discount
If receiving the newsletter by email	- \$20 Discount
Individual sub. if all discounts apply	<b>\$60.00</b>
Joint member (Active).	
75%. If all discounts apply	\$45.00
Joint member (Social) is	\$5.00
Junior Member is	\$20.00

Please pay to: Tauranga Woodcrafters Guild  
Account at Westpac 03-0435-0561886-00  
Do not forget to include your name

or mail cheque to  
Tauranga Woodcrafters Guild P.O. Box 9270,  
Greerton, Tauranga.

## GUILD DIRECTORY:

## GUILD DIRECTORY:

President:	George Yardley	579 1460
Vice-President:	Greg Taylor	021 992446
Secretary:	Mel Yeates	573 8188
Treasurer:	Margaret Dekker	543 0980
Newsletter Editor:	Phil Hansen	543 4332
Committee:	Barwick Harding	544 9094
	Mike Buck	574 4525
	Japie Volschenk	542 3633
Membership Secretary:		
	Mel Yeates	573 8188
Librarian:	Marlene & Jenny	
Webmaster:	Phil Hansen	543 4332
Workshop Maintenance:		
	Mike Buck	574 4525
	Roy Tregilgas	027 640 3793
Wood Officer:	Mike McCarthy	575 2991
BBQ Officer:	Colin Milne	543 0358
Workshop Mgrs:	Mike Buck & Roy Tregilgas	

## ADDRESSES:

P.O.Box 9270, Greerton, TAURANGA 3142

Workshop: 3 Cherokee Place, Mt. Maunganui

Website: [www.taurangawoodcrafters.org](http://www.taurangawoodcrafters.org)

Facebook: <https://www.facebook.com/taurangawoodcrafters/>

[taurangawoodcrafters/](http://taurangawoodcrafters/)

# General Report

**Neil Joynt Tour:** NAW advised in March that Neil's planned workshop in Tauranga, which had been planned for late April / early May, has been postponed.

**2020 Show:** We are continuing with our planning for the November 2020 Show. The venue has been booked, the street advertising sites have been booked, and the text of an advertisement has been prepared and sent out to appear in the Creative Wood magazine.

## Tauranga Activate Vacant Spaces:

Before the Virus situation arose, we had been offered the opportunity to put a display of members work in an empty shop window at 50 Devonport Rd in downtown

Tauranga (at no cost to the club). We understand they are still keen for us to have this display once our virus lockdown restrictions are lifted. We plan to take advantage of this opportunity to promote local woodwork and the Guild.

**Zoom Online Conference Calling:** The Zoom online video conferencing system allows individuals to meet and work together when face to face meetings aren't possible. The free version caps meeting lengths at 40 minutes for (now) & up to 100 participants at the same time. If any of you are interested to try it for a group meeting the download is available for different computer and cell phone platforms from <https://zoom.us/download>

You can contact Phil Hansen if you need help or want to try a meeting test. Having said this some members may have internet security concerns and will not want to install the application. You need to make your own decisions in that regard - do your own research first.

## GROUP ACTIVITIES

**The Workshop is currently closed and all Group meetings are currently suspended until further notice.**

Different members have kindly shared photos with me of the projects they have been working on at home ever since we went into Covid-19 lockdown. During this period of frustration, we can all count ourselves very lucky to have this hobby to keep the mind and body active.

# Tauranga Woodcrafters Exhibition 2020

**20th, 21st, 22nd November 2020**  
**Doors will Open from 10am - 4pm**

**\$5 ENTRY**  
**KIDS UNDER 15 FREE**

**Mount Sports Centre (Blake Park)**  
**Cnr Maunganui Rd & Hull Rd**

Webpage: <http://www.taurangawoodcrafters.org>  
Facebook: <https://www.facebook.com/taurangawoodcrafters/>



Woodcraft Sales  
Trade Stands



Demonstrations  
Members Expo  
Featured Exhibitors



LEARNED EXHIBITORS





## Group One: Woodcarvers

2nd & 4th Monday of the month, 9.30 am - 3.00pm.

Chris Barton has worked on his relief carving of some leaves, which he still needs to be stained and framed.

Phil Hansen has started & finished a carving of a Battle of Britain pilot in Kauri. The design is based on one of the figures which appear on the commemoration statue in London.



Ivan Watchorn has been thinking games while he is in lockdown, and sent in a photo of his beautiful Chess Table. It has 2 drawers with partitions to house a pottery chess set (60mm bases).

Merv Griffin reported on his "jail time" projects. His table was made to use up an old glass top and some old Totara verandah posts. Merv's home executive decried that it had to be finished in black. Merv has also been upgrading his feather boards and made a new push stick with abrasive material glued on the workpiece side to keep everything under better control.



## Group Woodturners:

Group 4 Hands on Turning - 1st Tuesday at 9:30am  
Group 4 Monthly Turners Meeting - 1st Tuesday at 1:30pm  
Group 4 Hands on Turning - 4th Wednesday at 9.30am

**The May 2020 Turners Challenge : A Platter any size to suit your needs and skill level and imagination. Send your photos in to Greg or Phil before 15th May. The prize will be a piece of Purple Heart!! Also If there are any more Fruit pieces from last month - how about you send them in too so we can make a real fruit salad. Happy turning.**





Greg Taylor has been experimenting with, and is now extolling the virtues of, Purple Heart timber as a way of enhancing any piece of work. Greg's latest work includes a 200x70mm high bowl made from this wood, a chopping board using Rimu and Purple Heart, and also a fly swat made from Rimu and leather.



Having recognised the benefits of having a colour difference Greg has also incorporated Purple Heart in his new home made chandelier.



Geoff Warth has been turning his own bottle opener.



Brian Wansbrough has created a really nice Swamp Kauri platter decorated with a stylised tree using pyrography, a lovely Sheoak bowl, and a vase made from a Totara fence post.





Jim Sutherland and Trevor Martin have also been busy on their lathes and supplied photos of their latest turned work which includes examples of their “fruit” pieces from the March turners group challenge.

Trevor’s bananas include the blackened edge ridges which sure makes each item



look very realistic. He is just hoping it inflates the sales price!

During lockdown Ian Dawkins sent some photos of his recent work which included some bowls an inlaid bread board and a cheese board where he has added some green resin.



Another member who has been experimenting with resins is Gavin Bell. In his case, Gavin has been using epoxy to strengthen pieces of “distressed” Cherry, Magnolia and what he describes as “rotten Karaka”. His larger bowl has been made from swamp Kauri.





## Group Five: Scroll Saw, Marquetry and Intarsia

1st and 3rd Wednesdays at 9.30am

During lockdown, Glenn Whittaker has completed a scroll saw picture of a kitten, Leigh Morris has built this flat pack bowl with wooden sides .....

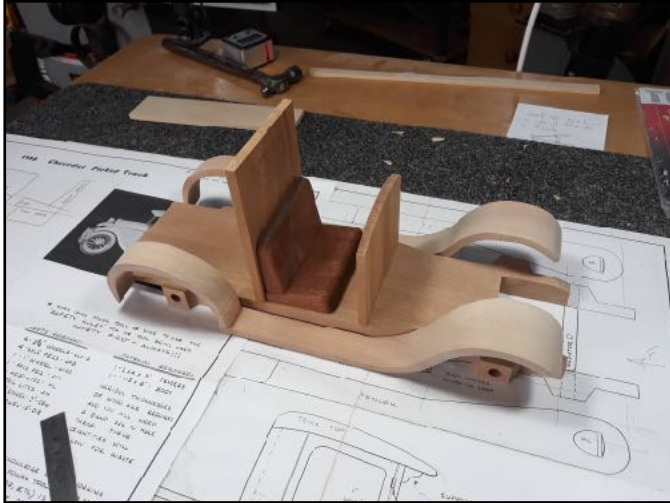


and Duncan Campbell has been making baskets, pencil holders and cars! I am still debating whether the man turning the crank, is a “cranker” or just “cranky”.



## Group 6 & 7: Open Workshop and Toy Making

2nd and 4th Wed at 6.30pm, 2nd & 4th Sat at 9.30am (new finishing time on Saturdays is 3pm).



Mike Buck reports that he is keeping sane by building a wooden 1928 Chevrolet truck from a plan he found hidden away in a drawer.

Grant Parker has been building toy trains for grandchildren.



While Walter Speidal shared a photo of a model sailing ship which he completed a while ago, but show off his lovely work.

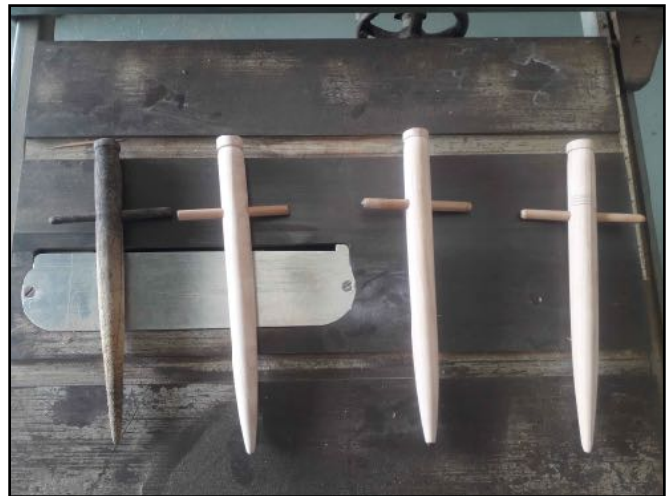


Jenny Bowker's lockdown project has been to prepare and finish off her own flock of birds.





Colin King is another member who has been making a table - he says it has been courtesy of "the tooth fairy Aunty Jacinda" who is "paying him to stay home". His new bar leaner is laminated from 13 strips of timber - Rimu, Cedar, Kahikatea and Totara - mortise and tenon joined and then glued (no nails or screws). The top was then finished with Resene Uracryl 402. This 2 pot epoxy will be very durable. Another of his projects has been to turn some fish hook removers from a Rimu broom handle for his new neighbour.



Workshop activities have also provided an activity for several members. Jake Stemmer sent photos of his new router jig, which he has made during lockdown. This is shown together with a new pen he has designed and made. You can see more on Jake's Facebook page.

DUTY ROSTER - 6 MONTH LOOK AHEAD

**Suspended until further Notice**

GUILD CALENDAR FOR MAY 2020

**Suspended until further Notice**

Last Word: from Phil Hansen





[www.timberlywoodturning.co.nz](http://www.timberlywoodturning.co.nz)

Timberly  
Textura



STARBOND  
CA GLUE

**TERRY SCOTT**  
NZ Agent for  
**BURNMASTER®**  
Also



See website for more

Contact: [timberly@xtra.co.nz](mailto:timberly@xtra.co.nz) for an info sheet or ph: (09) 297 7051

*Remember, if I cannot break it, no-one can!*



**WE ARE GRATEFUL TO OUR  
ADVERTISERS FOR THEIR SUPPORT  
AND THE SERVICES THEY PROVIDE  
AND WE ASK OUR MEMBERS TO  
SUPPORT THEM**

**J-Max**

**Sharpening Service  
Ltd**

Your supplier of  
sawblades  
Bandsaw Blades  
Router Bits

**99 Maleme Street Tauranga**  
**Phone 07 541 1655**  
**Fax 07 541 1652**

**Treeworkx.sandpaper**

**Ron & Heather Wallace-Wells**

Email: [treeworkx@xtra.co.nz](mailto:treeworkx@xtra.co.nz) Phone: 0-7-888 4396  
Address: 3 Puriri Place, Matamata 3400, New Zealand

**Treeworkx.wood**

**Graham Oliver**

email: [goliver@no8wireless.co.nz](mailto:goliver@no8wireless.co.nz) Phone: 0-7-888 3800  
Address: 469 Paratu Road, RD, Walton 3475, New Zealand



**MOUNT MAUNGANUI**

**1/130 Newton Street, Mt.  
Maunganui 3116**

**Phone (07) 574 9980 Fax (07) 574  
99850**

**Proudly providing the means for the**

**Guild to create and clean up  
sawdust and wood chips, since**



2006.

**Ross FM300 Dust**

**Extractor \$499.00**

**NOW AVAILABLE AT CARBA-TEC® NZ**

NOVA™ congratulates Carba-Tec® NZ Ltd on their NEW exclusive NOVA™ distributorship in New Zealand.

NOVA™ products are now available throughout New Zealand online and via catalogue, as well as through the Carba-Tec® extensive network of partner resellers.

Online and catalogue [www.carbatec.co.nz](http://www.carbatec.co.nz)

Or see their comprehensive showroom: 110 Harris Rd, East Tamaki, Auckland  
9:30am - 5:30pm Monday to Friday, 9:30am - 12:00pm Saturday  
Ph 0800 444 329 or 01 274 9454 Fax 01 274 9455