



Jacob brought three "executive toy" items along to the March 2019 critique and these were collectively selected as the work of the month.

THE PRESIDENT'S PAPERS

Sadly we have lost another member and colleague with the recent death of Rod Ham, Duncan Campbell has been in hospital and the health of Jim Reilly and Lew Tubby has deteriorated with both now being in care facilities. Our thoughts are with everyone and their families.

Coming events:-

9th April, 2019. Tuesday. NAW Neil Turner Tour. Clubrooms. 10.00a.m. meet and greet. Demo's start at 10.30a.m. and 1.30p.m. BBQ lunch 12.30p.m. Note that Jim Sutherland is now the Guild organiser for this event. Tel. 07 543-4829. E-mail sutherlandhelenjim@hotmail.com See the February, 2019 Newsletter for the program, details and costs. Group 2 please note that your session that day is cancelled. Financial Guild members will be subsidised \$10 by the Guild to encourage members to attend.

13th April, 2019. Saturday. Scroll Saw Workshop. See February, 2019 newsletter for full details. If this is on your calendar and you have not yet registered you need to do so urgently. The viability of this year's workshop is being considered due to low registrations so act now. If you are interested in scroll saw work I commend this to you.

30th May, 2019. Thursday. Clubrooms. 1.00 – 4.00p.m. Sorby/Carbatech Demo. Mark your calendar. Details to come.

a member club of the national association of woodworkers Inc.



See notices of Special General Meeting and Annual General Meeting below. These are meetings and a good membership attendance is essential.

That's it for now
Slainte, George Yardley, President

NOTICE OF SPECIAL GENERAL MEETING

To be held on: Saturday 20th April, 2019.

Time: 1.30.p.m.

Venue: Clubrooms, 3 Cherokee Place., Mt. Maunganui

Purpose of meeting: To consider proposed changes to the Tauranga Woodcrafters Guild constitution.

The proposed changes are posted on the notice board in the clubrooms

GUILD DIRECTORY:

President:	George Yardley	579 1460
Vice-President:	Greg Taylor	021 992446
Secretary:	Mel Yeates	573 8188
Treasurer:	Margaret Dekker	543 0980
Newsletter Editor:	Phil Hansen	543 4332
Committee:	Barwick Harding	544 9094
	Jim Sutherland	543 4829
	Japie Volschenk	542 3633
	Roy Tregilgas	027 640 3793
Membership Secretary:		
	Mel Yeates	573 8188
Librarian:	Merv Griffin	575 9792
Webmaster:	Phil Hansen	543 4332
Workshop Maintenance:		
	John Harrison	544 1950
Wood Officer:	Mike McCarthy	575 2991
BBQ Officer:	Colin Milne	543 0358
Caretakers:	Mike Buck & Roy Tregilgas	

ADDRESSES:

P.O.Box 9270, Greerton, TAURANGA 3142

Workshop: 3 Cherokee Place, Mt. Maunganui

Website: www.taurangawoodcrafters.org

Facebook: <https://www.facebook.com/taurangawoodcrafters/>

Newsletter: philhansen1951@gmail.com

NOTICE OF ANNUAL GENERAL MEETING

To be held on: Sat. 18th May, 2019.

Time: 1.30.p.m.

Venue: Clubrooms
3 Cherokee Place.,
Mt. Maunganui

MEETING REPORT

Finance: No issues. The Guild's financial position remains strong.

Neil Turner Visit: On April 9th (10am - 4pm) we are hosting a demonstration by Neil Turner - a top wood turner from Perth. Guild members who are NAW members will be charged \$35 and non NAW members \$65. The fee includes lunch, tee, coffee and biscuits.

Workshop Maintenance: We are planning to test and tag all the electrical leads being used in the workshop. The issue with the new vacuum cleaner tripping out is due to the rating of the electrical extension lead and this will be replaced with a high amperage lead. The blade on the Jet bandsaw is to be sharpened. Our updated Building Warrant of Fitness for the workshop has now been done. We are trialling a new arrangement of the meeting area furniture to try to improve the layout.

New Carving Bench: Thanks to Frazer Pengelly we now have a new carving bench in the workshop.

National WoodSkill Competition (Kawerau): Members are reminded that the National Woodskills Competition is scheduled for September 27/28/29 in Kawerau. You have until 25th August 2019 to submit your entry form to

nationalwoodskillskawerau@gmail.com. Each entry must be completed within the last 12 months, be

original, entirely your own work, and contain at least 80% wood. Categories of entry are: Pinus Radiata, Carving, Sculpture, Woodturning Novice, Woodturning Open Traditional, Woodturning Open Artistic, Furniture Novice, Furniture Open, Marquetry & Intarsia, Toys, Musical instruments, Youth (any wooden item), and Indigenous carving.

Critique: Lawson critiqued the monthly show and tell table at the March meeting. Jacob von Holzen's three scrollsaw items were selected as the work of the month.

DEMONSTRATION

Greg Taylor and Phil Hansen both made presentations to the March 2019 monthly meeting. Greg spoke on the process he uses for turning "Pipes, Tubes and Stacks", while Phil briefly discussed how members can use Microsoft's Powerpoint software tool for doing presentations to meetings.



Greg demonstrated how he goes about turning tubes from disk segments cut from a felled tree. He emphasised that it is important to use the wood before it dries and to turn it in a single session. This is so that as the wood dries the tube will distort and produce an interesting crooked shape. Greg starts with a (approx. 75 mm thick) circular disk cut from the tree. He keeps the bark attached and cuts across the growth rings into blocks which are the about same width as the thickness of the slab. He then bores out the centre of each tube on the lathe to the desired depth using a forester bit. A temporary wooden plug is slid inside the full depth of the bored hole; where the plug has been turned down to a diameter slightly smaller than the bore of the hole. This plug acts to hold the tube rigid while the outside of the tube is turned down to the required outer diameter. Greg normally keeps the bark on the tube to provide interest. He completes the job by cutting the tube to length. The starting disk of wood and the finished results are shown above. Note that each tube will bend / distort as the wood dries out.

Note: Group Six - Open Workshop - are on Duty for the April 2019 meeting. This is our special general meeting.

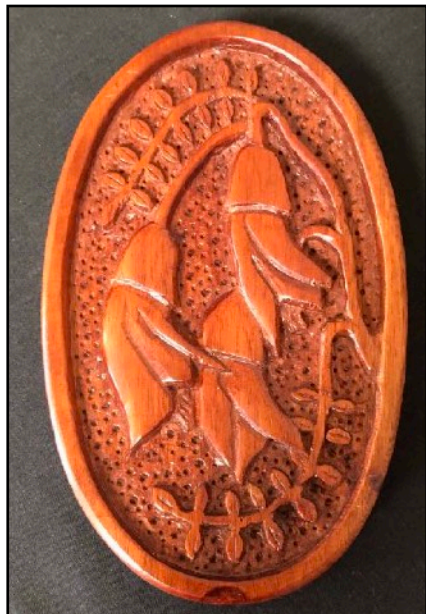
GROUP ACTIVITIES



Group One: Woodcarvers 2nd & 4th Monday of the month, 9.30 am to 3.00pm.

We now have 5 carving benches in the workshop. Thanks to Frazer Pengelly for building the new unit. We were sad to learn that we will be losing Kae our spoon carver (at least the short term) in April when his NZ work permit expires and he departs. However, our new Korean carver - Jien - began carving her first spoon at our last March Group meeting and Tom Coomber was starting a love spoon design. So Kae's spoon carving legacy will continue.

Doug St George has recently strayed over the the dark side of woodcraft, & demonstrated his versatility, bringing his first relief carving made from NZ mahogany along to the monthly Guild show and tell meeting.



Phil Hansen also had his recently carved jester piece which he calls "The Comical Engineer" (with its trouble expression reflecting possible engineering calculation errors) at the March show and tell session.

Phil Hansen for Ivan Watchorn (07) 308 7914.



Group Two: Woodturners

Group 2 has decided that due to ill health & the decline in their numbers that they are shutting down their monthly meeting. Henceforth Group 4 will be our single active turning group in the Guild, and the workshop is no

longer booked for use on the 2nd Tuesday of each month.

Group Four: Woodturners

Group 4 Hands on Turning - 1st Tuesday at 9:30am
 Group 4 Monthly Turners Meeting - 1st Tuesday at 1:30pm
 Group 4 Hands on Turning - 4th Wednesday at 9.30am

Our, Tuesday, early "hands on" programme was productive although we only had 6 lathes being used with Lawson Warsnop putting a couple of the turners through their paces on the proper use of a bowl gouge.

Bruce Wood from the South Auckland Woodturners Guild was our speaker and demonstrator for our main meeting. We had 21 members in attendance and this was a first class programme. Bruce began with a critique of the "show and tell" table and did not hold back when he saw an area that didn't meet his standard or liking. I'm sure those who displayed found benefit from his comments. The meetings main subject matter was in the handling and use of resins and he delivered an enlightened demonstration. He showed that resins have a multitude of uses, to decorate and add colour, you can add materials to the

resin to add design interest and aroma as in the use of coffee beans, he mixed 2 separate pours and we looked at the type of material that is best used for pouring forms. This lists a few of the areas covered. He went on to make 2 pens from earlier resin pours and presented these to members chosen on a random numbering system. We finished up with a discussion on using lacquer and spray gear. Bruce was an excellent presenter and wasted no time with his words or practical abilities.

On April 9th (10am - 4pm) we are hosting a demonstration by Neil Turner - a top wood turner from Perth.

Display items on the show and tell table this



month included a kauri and black walnut Earring stand by Mike Buck, a small kauri bowl and tubes (shown earlier) by Greg Taylor, a coffee bean pen (based on Bruce Wood's demonstration) by Mel Yeates and a beautiful off centre chestnut bowl made by Derek Kerwood. Derek challenged our minds to discover the plug in the base which he had used for turning the bowl - he had matched the grain of the plug and the bowl so perfectly.



Jim Sutherland 543 482



Group Five: Scroll Saw, Marquetry and Intarsia

1st and 3rd Wednesdays at 9.30am

It is pleasing to report that Group 5 continues to grow in popularity. All of our scroll saws have been in use at recent Group 5 meetings. We have actually been short of equipment for everyone to use.



However, we are short of participants for the 2019 Scrollsaw workshop event and unless we can get more registrations there is serious risk that the event will be cancelled.

Jacob von Holzen & Bob Fergusson both brought beautiful examples of their work to the monthly Guild meeting.

Japie Volschenk 5423633



Group 6: Open Workshops

2nd and 4th Wed at 6.30pm, 2nd & 4th Sat at 9.30am.

Roy has also been making spoons!! These were made from macrocarpa.

Group 6 is really humming with activity - poker table, coffee table and dolls house all being items under construction. Our last Wednesday workshop made me stop and think about the reason the council agreed to our use of the Cherokee place land, **NOISE**. Wow can we produce some! Our old neighbour would not have been happy. It also made me think about how far the Guild has come since we acquired our new premises. The old club rooms would have had trouble dealing with just our scroll saws let alone all of the lathes, other equipment and work benches.



We have also more than doubled our membership in that time as well as taking on school groups to give them a taste of hands on education. If you check out the annual planner in the lunch room you will find there are very few days the rooms are not being used. This says a lot about the success of our Guild.

Up coming meeting dates are: March Sat 23rd 9.00am, Wed 26th 6.30pm
April. Wed. 10th 6.30pm,
Wed . 24th 6.30pm Sat 27th 9.00am

Note: There will not be an Open workshop meeting on Saturday 13th April because the Workshop facilities are booked that day for the 2019 Scrollsaw workshop.

Roy Tregilgas 027 640 3793

Group 7: Toymakers

Anyone interested in making toys should come and join us on a Open Workshop day or evening meeting. Mike is happy to help you with whatever you want to tackle.

Mike Buck 574 4525

Thursday Students

The Familyworks program will restart for 2019 on May 9th. There will be morning and afternoon group sessions and we currently have 6 children booked to attend.

Mike Buck 574 4525

Homeschool Students

The Homeschool Woodcraft Class is going very well. The children attending the class are really showing development of their skills which has been pleasing for us all.

Doug St George 573 8399

**TAURANGA WOODCRAFTERS GUILD TENTH ANNUAL
HANDS-ON SCROLLSAW WORKSHOP
Fretwork, Intarsia & Marquetry
Guild Clubrooms, 3 Cherokee Place, Mt Maunganui
Saturday, 13 April 2019, 9.00am to 4.00pm**

Costs

Participant \$90 Includes: Set Project Materials, Morning tea, Lunch & Afternoon tea.

Non-participant \$30

Includes: Morning tea, Lunch & Afternoon tea.

If your scrollsaw has variable speed and takes pin-less blades please bring it with you.
A limited number of scrollsaws will be available for hire.

Registrations and enquiries to Raewyn Magon

569 Tauhei Rd RD5, Morrinsville 3375

Phone 07 887 6806. Mobile 021 155 8904

Email magonfam@xtra.co.nz

Registration forms available at <http://www.taurangawoodcrafters.org/Resources/Scrollsaw%20Wshop%20Registration.pdf>

Tauranga Woodcrafters Exhibition 2019

Woodcraft Sales
Trade Stands

22nd, 23rd, 24th
November 2019

Doors Open from 10am - 4pm

\$5
ENTRY

KIDS UNDER 15 FREE

Mount Sports Centre
(Blake Park)
Cnr Maunganui Rd & Hull Rd

Demonstrations
Members Expo
Featured Exhibitors

GUILD CALENDAR FOR APRIL 2019

Tues. 2nd @ 9:30am
Tues. 2nd @ 1:30pm
Wed. 3rd @ 9:30am
Mon. 8th @ 9:30am
Tues. 9th @ 10:00am
Wed. 10th @ 6:30pm
Sat. 13th @ 9:00am
Wed. 17th @ 9:30am
Sat. 20th @ 11:00am
Sat. 20th @ 1:30pm
Mon. 22nd @ 9:30am
Wed. 24th @ 9:30am
Wed. 24th @ 6:30pm
Sat. 27th @ 9:30am

Group 4 Hands on Turning
Group 4 Turners
Group 5 Scroll-saw
Group 1 Carvers
Neil Turner Tour Event
Group 6 Open Workshop
2019 Scollsaw Workshop
Group 5 Scroll-saw
Committee Meeting
Guild Meeting
Group 1 Carvers
Group 4 Hands on Turning
Group 6 Open Workshop
Group 6 Open Workshop

DUTY ROSTER - 6 MONTH LOOK AHEAD

April 2019	Group 6 & 7
May 2019	Group 1
June 2019	Group 4
July 2019	Group 5
August 2019	Group 6 & 7
September 2019	Group 1

Last Word: from Phil Hansen

*When you pull it apart, remember
to collect and keep all the parts
and make notes on how to put it back
together again.*



www.timberlywoodturning.co.nz

Timberly
Textura



STARBOND
CA GLUE

TERRY SCOTT
NZ Agent for
BURNMASTER®
Also



See website for more

Contact: timberly@xtra.co.nz for an info sheet or ph: (09) 297 7051

Remember, if I cannot break it, no-one can!



**WE ARE GRATEFUL TO OUR
ADVERTISERS FOR THEIR SUPPORT
AND THE SERVICES THEY PROVIDE
AND WE ASK OUR MEMBERS TO
SUPPORT THEM**

J-Max

**Sharpening Service
Ltd**

Your supplier of
sawblades
Bandsaw Blades
Router Bits

99 Maleme Street Tauranga
Phone 07 541 1655
Fax 07 541 1652

Treeworkx.sandpaper

Ron & Heather Wallace-Wells

Email: treeworkx@xtra.co.nz Phone: 0-7-888 4396
Address: 3 Puriri Place, Matamata 3400, New Zealand

Treeworkx.wood

Graham Oliver

email: goliver@no8wireless.co.nz Phone: 0-7-888 3800
Address: 469 Paratu Road, RD, Walton 3475, New Zealand

NOW AVAILABLE AT CARBA-TEC® NZ

NOVA™ congratulates Carba-Tec® NZ Ltd on their NEW exclusive NOVA™ distributorship in New Zealand.

NOVA™ products are now available throughout New Zealand online and via catalogue, as well as through the Carba-Tec® extensive network of partner resellers.

Online and catalogue www.carbatec.co.nz

Or see their comprehensive showroom: 110 Harris Rd, East Tamaki, Auckland
8:20am - 5:00pm Monday to Friday, 9:00am - 12:00pm Saturday
Ph 0930 444 329 or 09 274 9454 Fax 09 274 9455

**Machinery and
POWERTOOL**

MOUNT MAUNGANUI

**1/130 Newton Street, Mt.
Maunganui 3116**

**Phone (07)574 9980 Fax (07) 574
99850**

Proudly providing the means for the

**Guild to create and clean up
sawdust and wood chips, since**



2006.

**Ross FM300 Dust
Extractor \$499.00**