

Woodworking Tips



Making your garage a year-round workplace.

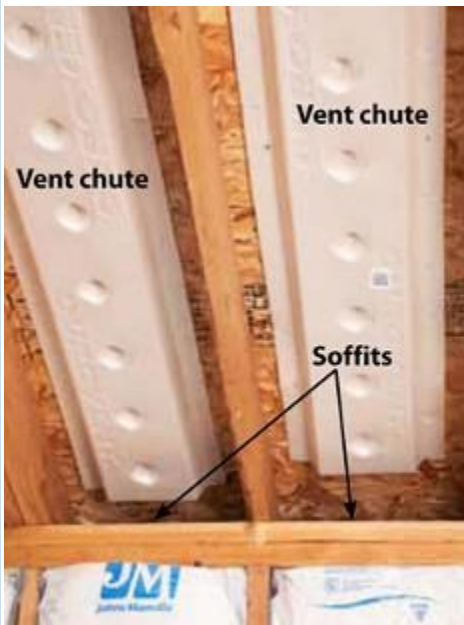
Many homeowners look at the garage as the largest room of their house and ask: Why can't we make better use of this space year-round? Great question! Sadly, too many garages are beastly hot in the summer and icy cold in the winter. Let's see if we can change that.

The detached 2 1/2-car garage shown here got an upgrade with batts of R-13 insulation in the walls and ceiling. The insulation and a new natural-gas garage heater will allow the homeowners to keep the garage interior 40°F or warmer all winter. The heated space transforms into a retreat for their kids to play in inclement weather, and working in the garage in the winter no longer requires gloves and a stocking cap.



We chose batts.

For this garage project, Johns Manville formaldehyde-free encapsulated batts were selected. Because the insulation is wrapped in plastic, the homeowners and friends who helped install the insulation experienced minimal itch and dust associated with traditional kraft-faced (paper-covered) products. (Safety glasses, nuisance dust masks, and long sleeves are still recommended.) According to the company Web site (jm.com), the poly-faced vapor retarder is twice as resistant to moisture as kraft-faced products. Thus, no vapor barrier was required.



Don't forget the air flow.

To provide unobstructed passage of air between the soffits (see steps next page) and the roof vents, attach vent chutes between the rafters. Industry guidelines suggested six pairs of vent chutes (12 rafters vented).





Nail them in place.

A pneumatic nailer makes quick work of securing 3/4"x4x8' sheets of oriented strand board (OSB) to the ceiling. Time to line the roof and gable ends: 18 man-hours.

Soffit Vents Key for Moisture Management.

1. Mark 4x16" openings for each of the under-eave vents in each soffit (front and back of this garage; six total). Drill 1" start holes in two corners of each opening



Make room for the vents.

2. With a jigsaw and a standard blade (10-12 tpi for hardboard), cut the vent opening. Be sure to wear eye protection to avoid getting sawdust in your eyes.



Louvers allow for your air flow.

3. Attach the louver for each vent. The louver allows cooler air to flow through the insulated rafters and out the roof vents--important on hot summer days.



Warm up to insulation.

1. With a sharp utility knife and a 24" carpenter's square, cut the insulation batts to length. For a clean, fast cut, push down on the square to compress the batts while you cut. Insulation will dull a knife blade quickly; this homeowner changed blades five times before the project was completed.



Fit the batts between the studs.

2. Pat the insulation batts into place. (In some regions of the country, you may find batts pre-cut for 8' or 9' walls, which saves installation time.)





Secure to the inside edge of the studs.

3. Staple the batts to each cavity, placing the staples every 8-10". To get full benefit of the insulation R-value, minimize compression when you staple the batts to the wall studs

You'll need to work around obstacles.

4. Temporarily run insulation around utility boxes, leaving at least 12" unstapled above and below the box. But don't forget to remedy this energy-waster, as shown on next slide.



Keep it tight around electrical boxes.

5. With a utility knife, cut around the box and remove a fluff of insulation (about equal to the utility box) and smooth out insulation surrounding the box.

ON THE LIGHTER SIDE

Why do we press harder on our TV remote control when we know the batteries are flat?

A little help at the right time is better than a lot of help at the wrong time.

Teacher: "If you hold nine oranges in one hand and ten lemons in the other, what do you have?" Jimmy: "Really big hands!"

The glass is neither half-empty nor half-full. It's an opportunity for a refill.

An elderly man was asked to what he attributed his longevity. His reply was, "It's probably because I went to bed and slept when I should have sat up and worried."

Grand mother to grandson: "Are you in the top half of your class?" Grandson: "No, I'm one of the students who make the top half possible."

TRIVIA

1. What mountain range separates Europe from Asia?
2. In naval timekeeping, how many bells are struck at midnight on New Years Eve?
3. Where is the great pyramid located in Egypt?
4. What does it mean to be "All of a twitter"?
5. Finish this weather proverb: Rain before seven,.....

1. The Ural
2. Sixteen
3. Giza
4. Very excited
- 5.....Fine by eleven.

Roy Tregilgas



Our Sponsors' Page Please support their services whenever possible

J-Max Sharpening Services Ltd

99 Maleme Street
Tauranga
Phone 07-541 1655
Fax 07-541 1652

Your supplier of
Sawblades
Bandsaws
Router Bits

STEEL TOOLZ LTD 021 1038844 katools.co.nz

TUNGSTEN CARBIDE TIPPED CHISELS
ROTARY TOOLS FOR ANGLE GRINDERS
CARBIDE BURRS

HOLLOWERS, ROUGHERS, FINISHERS, DETAILERS, CHUCKS & FACEPLATES
steelgi@hotmail.com

SANDING BULBS
FLEXIBLE SHAFTS
MINIATURE CARVING SETS

5- 30,000 RPM
1/8" & 1/4" SHAFTS

KING ARTHUR'S TOOLS
SABURR TOOTH
CARBIDE COATED ROTARY TOOLS

NOVA™

NOW AVAILABLE AT CARBA-TEC® NZ

NOVA™ congratulates Carba-Tec® NZ Ltd on their NEW exclusive NOVA™ distributorship in New Zealand.

NOVA™ products are now available throughout New Zealand online and via catalogue, as well as through the Carba-Tec® extensive network of partner resellers.

Online and catalogue www.carbatec.co.nz

Or see their comprehensive showroom: 110 Harris Rd, East Tamaki, Auckland
8:20am - 5:30pm Monday to Friday, 9:00am - 12:00pm Saturday
Ph 0800 444 329 or 09 274 9454 Fax 09 274 9455

Club/Guild Newsletters;

This Club/ Guild aims to assist members to improve their woodwork-ing skills. Not all such activities occur in our Club premises, and some activities or events are promoted through this Newsletter and others directly to members in some other ways, but they are still Club/Guild activities, please support them. These activities may include personal and group tuition of members by other members (we all try to help one another for the benefit of the Club/Guild in this way) sessions in member's workshops, wood- gathering, events promoting our activi-ties to members of the public, and other such activities and events.

For Sale

Liberon Oil 150 mm Bottles \$7.00

Phone Ian Dawkins 576 2511

For Sale

Log seal (the new name for Mobil CER)

\$6.00 per litre

Robert Thomson Ph. 576 3960

TAURANGA SENIORNET

Where Seniors learn Computing from other Seniors;

Our courses are, 2 hours, one day a week, and range from 4-5 weeks per course.

Our Learning Centre is at Unit 70, Historic Village, 17th Avenue, Tauranga. That's just uphill from the now-closed Wickham School. We have our own drive-in entrance. Turn right once through the gateway and then park.