



# The Woodcrafters

TAURANGA WOODCRAFTER'S Guild NEWSLETTER

Issue 254

May 2013

Website; [www.taurangawoodcrafters.org](http://www.taurangawoodcrafters.org)

## In This Issue:

|                         |       |       |
|-------------------------|-------|-------|
| Ponderings of the Month | Page  | 1     |
| Meeting Report;         | Page  | 2-3   |
| What's on               | Page  | 4     |
| From the Editor         | Page  | 4     |
| Reports;                | Pages | 5-9   |
| Woodworking Tips        | Pages | 10-13 |
| Our Sponsor Page        | Page  | 14    |

## **TWCC Committee;**

|                                   |                   |          |
|-----------------------------------|-------------------|----------|
| <b>President;</b>                 | Peter Seaton      | 576 8083 |
| <b>Vice President;</b>            | Mike McCarthy     | 575 2991 |
| <b>Secretary;</b>                 | Geoff Warth       | 579 3637 |
| <b>Treasurer;</b>                 | Grant Parker      | 544 9373 |
| <b>Newsletter Editor;</b>         | Selby West        | 578 8934 |
| <b>Librarian;</b>                 | Jim Reilly        | 577 9574 |
| <b>Workshop Manager;</b>          | John Harrison     | 544 1950 |
| <b>Wood Person;</b>               | Mike McCarthy     | 575 2991 |
| <b>Building project convener;</b> | Doug St. George   | 573 8399 |
| <b>Webmaster;</b>                 | Rob Smith         | 5769652  |
| <b>Committee;</b>                 | Roy Tregilgas     | 574 7405 |
|                                   | Stephanie Simpson | 544 3194 |

**Club Meeting;** 3rd Saturday afternoon of each month  
1.00pm at our Clubrooms.

**Clubrooms;** 16 Yatton Street Greerton Tauranga.

**Correspondence ;** P.O. Box 9270 Greerton Tauranga

**Secretary E-mail;** Geoff Warth; [gep@kinect.co.nz](mailto:gep@kinect.co.nz)

**Club Website;** [www.taurangawoodcrafters.org](http://www.taurangawoodcrafters.org)

**Next Meeting;** Saturday 15th June. 2013

**Group on duty;** Group Five Scrollsaw

**Demonstration-Speaker;**

## Ponderings of the Month

I am looking forward to visiting the Timber and Working with Wood Show in Brisbane on Saturday 18 May. It will be interesting to pick up on a few new ideas. I didn't think I would make it as my wife is currently in hospital.

We have been fortunate to have an allocation of land in the Hewett's Road subdivision for our new Guild building. Hopefully Doug can get the lease tied up soon so we can start on the plans of the building. Well done Doug!

Speaking of buildings .... for 40 years the New York Empire State Building enjoyed the distinction of being the world's tallest building at 1250 feet. Since then, others have passed it, including the 1483 foot Petronas Twin Towers in Kuala Lumpur, Malaysia, and the 1670 foot Taipei 101 building. The tallest building now is the Burj in Dubai at 2657 feet.

From ancient times man has tried to distinguish himself through monuments of all kinds. It is still the dream of many today.

Many of us, unfortunately, build our own monuments to pass failures and we continue to revisit them, wondering why we never move on in life. These visits are like watching a rerun of our life's videos of our past failures. In demolishing these monuments, we will be surprised at the freedom it finally gives us. Don't revisit those sites. Move on.

And the quote for the day .... **"The greatest ability in business is to get along with others. A chip on the shoulder is too heavy a piece of baggage to carry through life"** -- John A Hannah

Peter Seaton



## MEETING REPORT;

**Members in attendance; 30 members plus 3 visitors**

**New Members;** We welcomed Walter Speidel as a new member to our Guild.

**Enrolment forms;** There has been a lot of confusion in the enrolment forms which I sent out with the last Newsletter. I had printed them with \$10.00 instead of \$15.00 discount for the Newsletters sent out by email. If you have only deducted \$10.00, you may either regard it as a donation to the Guild or ask receive your \$5.00 back. There also seems to be three different versions of membership forms too. We will have to sort this out so there is only one!!!!

The committee has also decided that for **New Members** only, joining the Guild after the 1st of June onwards, there will be a deduction of \$6.00 per month from the full subscription.

**Raffle;** The raffle was won by one of our visitors Ian Dawkin's Daughter Janine.

**Critique;** There were some nice work on the table this afternoon again. Derek Kerwood did the critique.

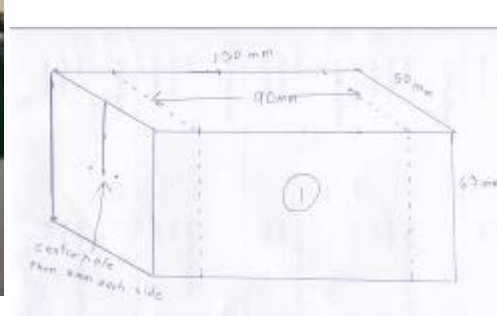




Here the work on display today

**Our Guest Speaker; this month was Ian Dawkins.**

His demonstration was on turning Soul Seeds, a project that he would like to see as many Guild Members as possible try their hand at doing, to make some extra money for our future new Guild Building. He handed out drawings of the project to all members present, and then went into great detail on how he made them. Starting off with a block of

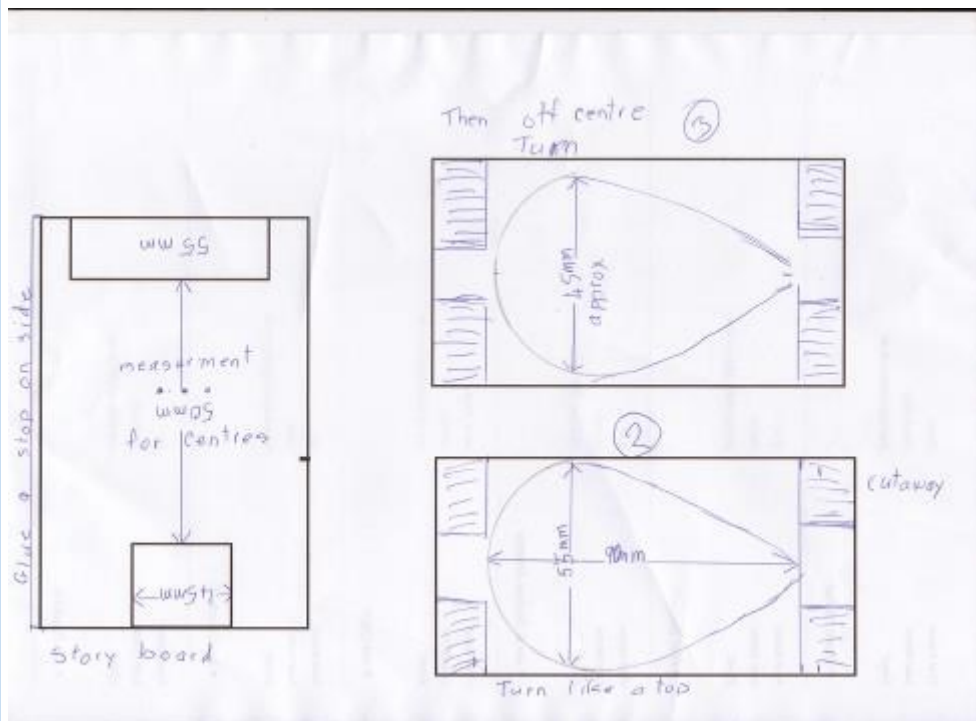


wood 130mm x 50mm x 63mm with a centre and two off centres 5mm apart at each, drawing 1. He then mounted it between centres on the centre marks first and turned the corners off, and formed the basic shape,

(drawing 2.) Next he mounted the blank back in the lathe on the first of the two off-centres to turn the first side of the oval, shifting to the second off-centres to turn the other side. He then a power sander in the lathe, to sand the it, with the lathe turned off and just turning the work round by using the hand wheel on the lathe' hand wheel. To save time Ian made the Story board for marking the centres, and gauging the sizes of the top part.

Thanks Ian for your excellent demonstration.

Selby West



## ***What's on;***

**Group one;** Woodcarvers. Clubrooms. Monday 10th June. 9.30 at the Clubrooms.

Contact Ivan Watchorn Ph. 07 308 7914

**Group two;** Woodturners. Tuesday 11th June. 1.30.

contact Seth Douglas Ph. 576 5815

**Group three;** Woodturners. Saturday 1st June at the Clubrooms 9.30 am.

Contact Jim Reilly Ph. 577 9574

**Group four;** Woodturners. Tuesday 4th June 1.00pm.

Contact John Adnitt 576 9130 or Harry Bimler Ph. 572 2071

**Group Five;** Scrollsaw and Intarsia. Wednesday 5th June. 9.30 am

Contact Lauren Tubby Ph. 5720104

**Group Six;** Toy Makers. Saturday 8th June. 9.30 Tuesday 25th June. 6,30pm

Contact Roy Tregilgas Ph. 574 7405

**Group Seven;** Night Shift. Wednesday Nights 4th & 19th, June 6.30–9.30 pm

Contact Roy Tregilgas Ph. 574 7405

**Woodcraft Classes for Home School Students;** Wednesdays. 5th & 19th June. 1.30pm

Contact Doug Ph. 573 8399

**Main Meeting;** Saturday 15th June. 1.30 at the Clubrooms.

### **The Home Show 18th to 20th October**

**Tauranga Woodcrafter's Guild Annual Show;** 15th to 17th November will be held in the Mt. Maunganui Sports Centre, Maunganui Road, Mt. Maunganui.

Guild **BBQ** will be, one at Bunnings Saturday 24th August, and one at Mitre 10 Saturday 29th September. So much for me reporting that there was to be one each fortnight!!! It appears that these were the only days left not booked.

### ***From the Editors desk;***



***Hello Fellow Woodworkers,***

*I am sorry* Peter Steward is going to resign from the Guild because of his failing eye sight. It was through Peter, John Crabtree, and Graham Williams that I first come onto the Committee, and I also had to take over the Group Five as well. A lot has happened in the Guild since then.

It's good to see we are getting some new members to the Guild, although we are also losing some as well.

We seem to be getting closer to having a site for our new Guild building, providing there is room on it, otherwise it will be back to square one. I am not overly happy with the position of the site, specially if it could flood, but you have to take what is offered, as we have been a long time getting this far. There was another site that Doug had mentioned also so maybe we well be able get that instead.

Selby West.





## Group Reports

### **G**roup One Woodcarvers; 2nd Monday 9.30am

Six members attended plus two Mums and four Children.

The latter getting an introduction to Woodcarving from Ivan Watchorn. He had projects prepared and it was full on from 10.30 am to 1.30 pm.

We also had a visit from a prospective new member Walter Speidel who got involved along with the Children.

To avoid getting trampled underfoot the remaining Group Members quietly got on with their own projects. Alan with another Winchester rifle, Hand gun and Holster. Tom a full size Man's Head. Ken a Mask. Barwick with a knotty knot-hole Owl House.

Jean Crabtree was absent due to an injury to a leg which had turned septic and is currently receiving attention from the local District Nurse. She expects to be out of the action for a few weeks yet. You have our sympathy Jean from all the elderly crackpots of the Carving Group.

Another sad note has been Peter Steward's intention of resigning from the Guild due to failing eyesight. A loyal member of the Carving Group and friend to everyone. He joined the Club around 1986 when Jim Cowley was President and John Crabtree was Secretary. Peter was Club Treasurer around this time and has experienced much of the Club's history. It is not farewell Peter! we will be in touch!

Next Group meeting 10th June.

Ken Hawkeswood for Ivan Watchorn- Group Leader Phone 576 9011

### **G**roup Two Woodturners; 2nd Tuesday 1.30pm

Tuesday, 14th May 2013, seven of us met at J-Max at Maleine Street, and it's thanks to Julie who showed us around their Show and Sales room, and Phil who showed us through the workshop and even had a few machines working, sharpening a circular saw blade. The Vollmer (German Machine) is able to work through the night on it's own without an operator, picking a blade up off the stack, sharpen and stack, and working it's way through the stack. J-Max advertise in our Guild Magazine, and once again, Many Thanks to Julie Harwood and Phil for having us for the afternoon. We were most thankful and grateful for their time and effort.

Group Two meet on Tuesday June 11th 2013 at my place by invitation, those who I ring, that is our regulars in the Group.

*Seth Douglas Ph. 576 5815*

### **G**roup Three Woodturners; 1st Saturday 9.30am

Group Three met at the Guild rooms on 4th May 2013. Eight of us solved problems, and it was only Lew Tubby and his neighbours who were having problems with thefts and having to have the Police involved. The problem was one of the visitor occupants next door. Lets hope that it is back to normal again.

Saturday June 4th 2013 is our next meeting at the Guild rooms 9.30am and PLEASE bring with you the projects you are working on for "Show and Tell" Many Thanks

Seth Douglass for Jim Reilly 5779574



## **G**roup Four Woodturners; on the first Tuesday of the month 1.30pm



On the afternoon of Tuesday the 7th May twelve members met at our clubrooms. Tas had prepared plenty of blanks for his project. These were a mixture of pohutukawa and swamp kauri. The exercise was to turn a wooden body for a large grasshopper, locust type insect of which he had a sample and he had also provided some pliable rods to make the legs. He had made this more interesting by adding some flashing eyes and sound from a \$2 toy! Unfortunately many of us had forgotten to bring our own tools so had to take our blanks home and do the job later!

Please remember your tools in future! However four people did a good job and we look forward to seeing the finished articles at a later date!



It was good to see Mike Harold on deck again and we were sorry to hear that John Adnitt was having problems with his health, but he is now home from hospital so we all wish you well John! Tom Coomber has decided to concentrate on his carving with Group One so has decided to pull out of Group Four. We wish you well Tom! This will mean a reshuffle for our roster, so Tas will provide new copies shortly.

Sent in by Morry Lawton

Group 4 currently has no designated leader, but contact is through John Adnitt 576 9130 or Harry Bimler 572 2071

## **G**roup Five; *Scrollsaw and Intarsia*; Wednesday 3rd 9.30am

A very small group of seven attended our April meeting, perhaps it was because it was the 1<sup>st</sup> of the month. Those who were there were all busy working on various projects, Glenn and Japie were both working on intarsia and are making very good progress. Jacob, Russell and I were working on fretwork pieces and Roy a jigsaw. As usual we had quite a variety on the display table with Easter egg baskets, a plaque of a map of New Zealand, an inlay of a lady on a stool, and two intarsia pieces featuring dogs by Barry and a "Roly dog" made Glenn.

The date for next year's Annual Scrollsaw Workshop has been set as Saturday, 29<sup>th</sup> March.

Our next group meeting will be held on 5<sup>th</sup> of June, meeting at the Clubrooms at 9.30am, Visitors are always welcome. Please bring your lunch

We will be on duty for next month's main Club meeting, please remember your contribution for afternoon tea.

Laureen Tubby Phone 572 0104 Email ltubby@xtra.co.nz



## **G**roup Six Toy Makers; 2nd Saturday 9.00am and the fourth Tuesday. 6.30pm.

All's going well with our group, along with two cots being finished we have sold another set of Mahjong boards. As far as I can remember both the cots were pre sold, one through Laureen and the other,?. I can't remember who ordered it', is there anyone out there who put an order in for one of these.?

The added meeting on the Tuesday night seems to have made a difference as our projects are moving a little faster. I am still hoping there are other club members making something for the toy table at the annual show.

Our June meetings are Sat 8th at 9-00am and Tues 25th at 6-30pm

Roy Tregilgas Ph. 574 7405

## **G**roup Seven Night Shift; 2nd and 4th Wednesday nights 6.30-8.30pm

Although this is only a small group we do enjoy our night at the Club Rooms and it is great to see Ian back on the job after his illness. Our meeting night were on the first and third Wednesday of the month but starting from June we will be changing to the second and fourth Wednesday. The reason for the change is that the first Wed. I was spending nearly 12hrs at the Club Rooms, as I had Scroll Saw Group in the morning, followed after some lunch with the Home School Group in the afternoon, with a two hour break before returning for the Night Shift. The third Wed is also Home School Group so the change will take the pressure off a little.

The June meetings are, 12th and 26th at 6-30pm

Roy Tregilgas Ph. 54 7405

## **W**oodcraft Classes for Home School Students; 1st and 3rd Wednesdays 1.30-330pm

HOME SCHOOL CLASS

As term 2 begins, we find that some of our students have winter sport on Wednesdays. We have tried to find another day to suit everyone, but without success. The class will be held on the first and third Wednesdays each month.

Wendy has passed on an email from one of the other Mums, who says:

"Unfortunately we are going to have to give woodwork a miss for the next couple of terms. My kids look forward to coming back, if possible, after our sport seasons. Thank you so much for all your effort to organize such an awesome activity. **Please relay our deep gratitude to all those wonderful men who give of themselves so generously.**"

I think that almost says it all. Wendy's family of three have also joined the Carving Group, where I understand that Ivan, in particular, is doing great work with them. So a big Thank you to all the Tutors, from them and from me.

We have three new students, and it is good to see that some of those who started last term are well able to help the newer ones, if they get into difficulties, when a Tutor is not at hand.

Doug St.George May 2013

## **B**uilding Report; Doug St.George.



## BUILDING PROJECT REPORT.

We have received an email from the

Council Parks Manager, saying that there

is a space available for us to build on, in the Hewlett's Reserve. I have indicated that we are keen to get things under way as soon as possible.

Below is an assessment of the space I think we need in a Building, and a concept drawing showing how it might look. I invite your comments. All figures are in square metres:

### Necessary Facilities:

Kitchen 8 sq.m.

Toilets x 2 4

### Demonstration and Meeting Area:

Tiered Seating 40

Extra Standing Room 30

### Storage Areas:

Timber Racks 6

Storage Cupboards 3

Library 5

### Work Stations allowing safe working space:

Workbenches x 5 @ 3 each 15

Carving stands X 5 @ 2 each 10

### Machinery allowing safe working space:

Lathes x 6 @ 3 each 18

Bench Saw 3

Thicknesser 2

Buzzer 2

Big Bandsaw 3

Bandsaw 2

Cut-off Saw 2

Sander 2

**Total Minimum requirements = 150sq.m.**

Ideally we would like 200 sq.m. to allow for future growth.

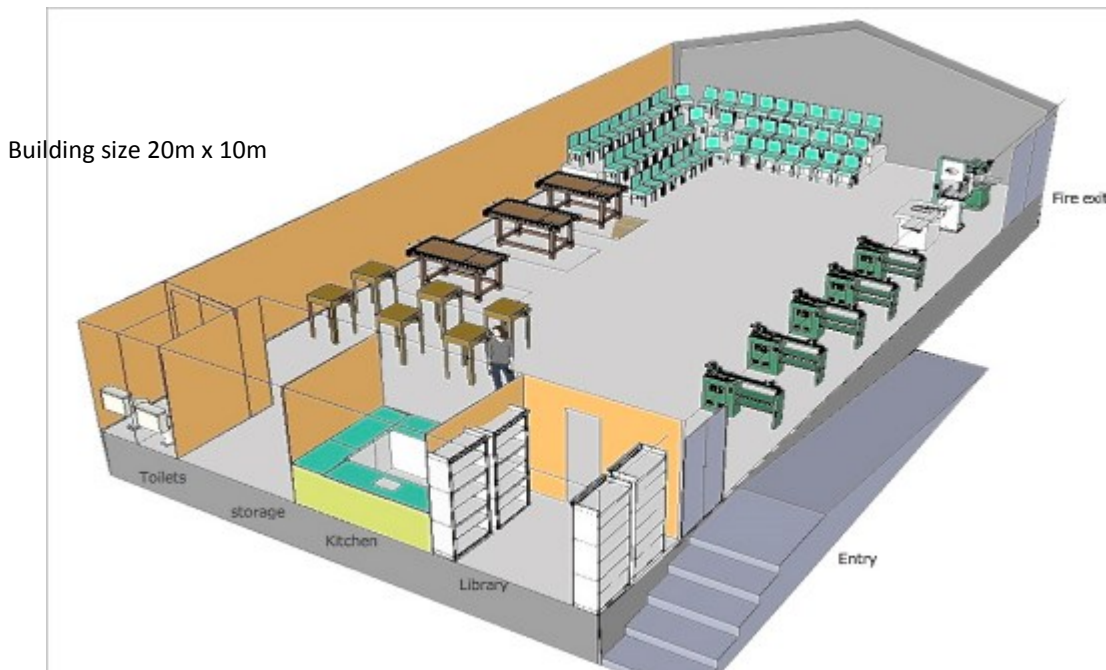
### Style of Building envisaged:

A simple rectangular shed. Library, Kitchen, Toilet and Storage Area grouped at one end.

Coloursteel cladding and roof.

Timber floor.

Doors, windows, skylights





Building fund challenge - A big thank you to Dereck Kerwood, who has sold a beautiful Carving Bench and donated the proceeds to our Fund.

Doug St George

## SHOW NEWS

The Show Committee are working at putting this years Show together, we are hoping for some new ideas that will be able to be implemented this year, nothing too drastic, we will let you know at a later date.

What we do need to know from the members is who would like a stall, give it some thought and let us know at the next Club day. We would also like everyone to make and donate a quality item for the Club Table, all the Proceeds from this will go towards the Building Fund so get out into your workshops and start creating.

Roy Tregilgas Ph. 774 7405



### For sale -

Asmac lathe complete with tools and chuck,  
asking \$900,  
contact Bill Sidebottom 5443749  
(picture attached)

### For Sale

Tanner sawbench and jointer planer on stand. 2HP motor. New bearings have been fitted. Spare planer and saw blades. \$1000.00. Dust Collector; \$50.00

Contact Barry Kenworthy Ph. 533 3747 evenings

**Your Subscriptions are now due; If you have not paid your Subscription yet, you only have until the end of this month to take advantage of the \$5.00 discount.**

